

explore. learn. excel.



INTERNATIONAL

English Language Programs & Pathways 2021



Table of Contents

The FLS Advantage	2	Boston Commons	19-20
FLS by the Numbers	3	Chestnut Hill College	21-22
Locations Preview	4	Accommodation	23
In-Person Programs	5-6	Volunteering Opportunities	24
Test Preparation Courses	7	Your First Day	25
Online Programs	8	Keeping Students Safe During Covid	26
Study 30+ at Boston Commons	9	Exclusive Features	27
Overview of FLS Levels	10	Pathways at FLS	28
Concurrent Enrollment	11	Universal Placement Program (UPP)	29-30
High School Completion	12	UPP School List & Map	31-32
Citrus College	13-14	Testimonials	33
Saddleback College	15-16	Calendar & Locations Key	34
Marymount Manhattan College	17-18		

The FLS Advantage

Here are just a few reasons why FLS International offers international students an unbeatable learning and cultural experience:

- **Small class sizes** ensuring individual student attention
- College and university **placement assistance** at no additional charge
- Programs using the **immersion method** of language instruction emphasizing spoken English
- Structured **Pathway programs** to effectively prepare students for college entrance
- **Eighteen levels** of English study
- Unique **English Everywhere** program highlighting key curriculum points each week
- Experienced **academic counselors**
- Accreditation by **CEA (Commission on English Language Program Accreditation)**
- Centers located in **safe and secure** environments
- Monthly **Language Extension Day**, letting students use their English in new settings
- **Highly qualified teaching staff** with all faculty holding Master's Degrees or TESOL credentials

WELCOME TO FLS

With globalization increasing, it's more important than ever to learn about other cultures. There's no better way to understand a new culture than by learning its language. This is what FLS International has been about for over 30 years.

By joining an FLS program, students improve their English, gain an understanding of other cultures and develop their independence. Studying overseas can be life-changing, leading students to challenge themselves, find their true passions and increase their personal growth.

As America's largest network of family-owned and operated language schools, FLS is proud of our excellent record of student satisfaction and client service. Our responsiveness to students ensures that FLS is your best choice for a unique and valuable American experience.

This year we are proud to announce the addition of many online study options for our students overseas. These courses bring you the same high-quality curriculum and expert teachers you expect from FLS along with the convenience of studying from home.

FLS invites you to create your own story!

Sincerely,

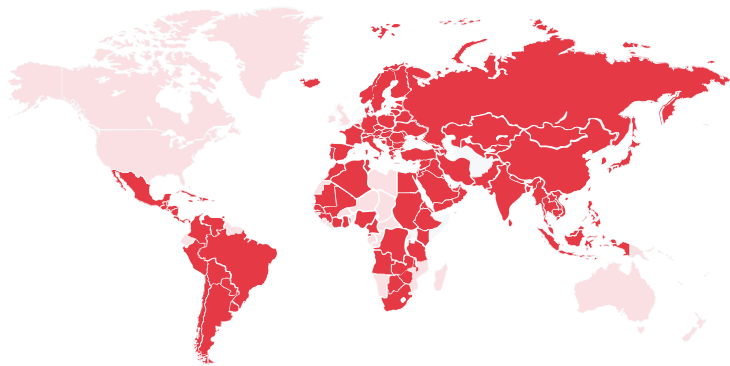


Francine Forman-Swain
Director and Founder



FLS by the Numbers

35 YEARS OF SUPERIOR FLS EDUCATION PROGRAMS



104

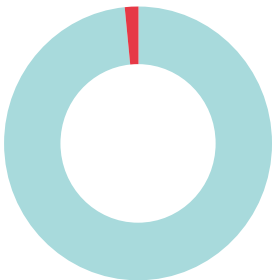
Countries sending students each year

NATIONALITY MIX	JAPAN	15%
	CHINA/TAIWAN	14%
	MIDDLE EAST	12%
	RUSSIA/EASTERN EUROPE	11%
	LATIN AMERICA	11%
	WESTERN EUROPE	10%
	BRAZIL	9%
	SOUTH KOREA	9%
	THAILAND	4%
	VIETNAM	4%
	OTHER	1%

15



Languages spoken by FLS staff



98.5%

Student satisfaction rate

18



Levels of English

5,000+

Students enrolled each year

300+

Students transferring to colleges and universities every year

10



Students in the average class

150+

Partner institutions with transfer agreements

3-5



Activities offered each week

100%

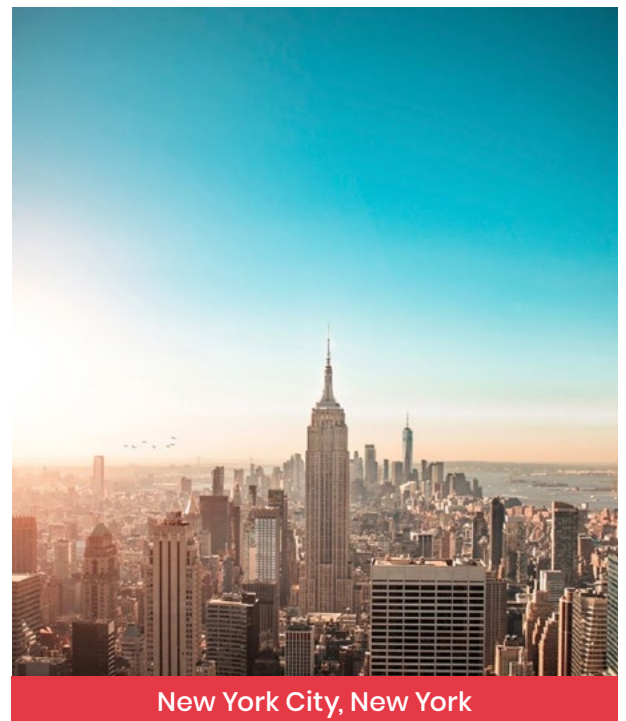
FLS teachers with TESL Certificates or Master's Degrees

100%

FLS schools offering volunteer experience every term

Our Locations

Whether students are seeking the relaxation of lying in the sun on a gorgeous Southern California beach or the excitement of shopping the bustling, cosmopolitan streets of New York City, FLS locations offer the best of the United States in attractive cities across the country.



In-Person Programs



- Integrated Skills Core Class
- Elective Class
- Academic Workshop

- Test Prep Class
- Executive Business
- General Business English (Elective)

Academic English Program

36 lessons per week : 6 daily hours of study



The FLS Academic English Program is perfect for the student who wants to improve their English skills as quickly as possible and get on the right track for college and university success! This program offers the most lessons per week available at FLS. Students are able to enroll in the full-range of courses offered. The program includes one core class, two electives, and one academic workshop. Students in the Academic English Program also have access to our Test Preparation courses.

Intensive English Program

30 lessons per week: 5 daily hours of study



Our popular Intensive English Program offers a well-rounded learning experience for students who have varied English goals, allowing students access to a wide range of FLS electives in order to provide a more versatile experience. The program includes one core class, one elective, and one academic workshop.

General English Program

24 lessons per week: 4 daily hours of study



For students who want to balance English studies with time to explore the fascinating sights and activities near our centers, our General English Program is the ideal choice. The program includes one core class and one academic workshop.

Core English Program

18 lessons per week : 3 daily hours of study



For those looking for a part-time study option, our Core English Program offers the perfect schedule, blending the study of English fundamentals with ample time to experience the many local attractions and destinations. The program includes one core class. ***This program is not available to students on an F-1 Visa.***

NOTE: Each lesson lasts 50 minutes



We welcome overseas students to join our in-person classes virtually.

Test Preparation Programs

36 lessons per week : 6 daily hours of study

3

2

1

Standardized tests are a critical step on the road to success for most international students. Many universities, graduate programs, and employers require these tests as part of their application process. The program includes one core class, two hours of test preparation, and one academic workshop. Each course provides the student with the necessary skills and practice to achieve success on the chosen exam. ***Please see page 7 for detailed descriptions.***



Executive Business English Program

30 lessons per week : 5 daily hours of study

3

1

1

Improve your Business English in one of America's financial capitals: Boston! Our Executive Business English Program is designed for professionals who need to learn English for business purposes and who have limited time to study. The program includes one core class, one comprehensive Business Elective class, and one daily session of specialized small group study consisting solely of Executive Business English participants.

CORE CLASS

Our Core Class is the foundation of our English Language Program and is offered in 18 levels, from beginner to proficient. Each level provides integrated instruction and practice in the four major language skills: listening, speaking, reading and writing. Students who complete Level 14 are eligible for transfer to many partner colleges and universities. Each level lasts 4 weeks and includes 60 hours of instruction.

SAMPLE ELECTIVES

Our elective classes allow students to focus on specific important skills and topics and improve their areas of weakness. Here are just a few of the many electives we offer. Each class lasts 8 weeks and includes 40 hours of instruction.

- Conversation
- American Culture
- Critical Thinking
- Business English
- Practical Grammar
- Slang and Idiomatic Speech
- Public Speaking
- English Through Film

ACADEMIC WORKSHOPS

Our Academic Workshops provide brief, daily self-contained lessons and practice in such areas as Pronunciation, American Songs, Vocabulary, Current Affairs and Topical Conversation. The emphasis is on participation and practice in a more relaxed atmosphere to allow students to increase their English fluency.



FLS International Test Preparation Courses

Standardized tests are a critical step on the road to success for most international students. Many universities, graduate programs, and employers require these tests as part of their application process. With experienced teachers, proven curriculum and ongoing personalized feedback, our test preparation programs are sure to take your score to the level you're looking for!

FLS is now pleased to offer in-person and online options for test preparation. Review the conditions below to find out which choice is right for you!

IN-PERSON OPTION	ONLINE OPTION
<ul style="list-style-type: none"> • Student must complete the required FLS level (or test above the level upon arrival) • Student will study a full-time program of four hours per day in FLS English classes. Student will study an additional two hours per day of test preparation coursework • Average class size: 5 	<ul style="list-style-type: none"> • Student must achieve the required level on the proficiency test or demonstrate comparable proficiency • Student will study two hours per day of test preparation coursework • Students may add additional online English study as needed • Available in 6 am Pacific or 6 pm Pacific time slot (see website for current availability) • Average class size: 5

TEST PROGRAM	OPTIONS
TOEFL The TOEFL test challenges students to analyze and synthesize academic passages and use advanced discourse. Our program will give students test-taking strategies and enhance their ability at making inferences, synthesizing information, finding factual material and analyzing reading passages.	Requires FLS Level 9 proficiency. Available at FLS Citrus, FLS Boston Commons and Online
IELTS IELTS is a popular test used by employers and colleges to measure English proficiency. Our program provides students with the skills to understand native speakers, follow the development of an idea, find the main idea, interpret points of view and discuss abstract ideas.	Requires FLS Level 9 proficiency. Available at FLS Boston Commons and online.
SAT The SAT is the most commonly taken test for U.S. students entering college. Our program provides students with an understanding of the test structure and improves their ability to analyze written passages, understand key academic vocabulary, use standard writing conventions and solve problems in data analysis and algebra.	Requires FLS Level 13 Proficiency. Available at FLS Boston Commons and online.

Online Programs

All FLS Online programs feature live instruction with experienced instructors in small group classes! Take an FLS Essential English course before you begin your in-person program to get a head start on your program! Or continue your study after your in-person program to further advance your skills!



ESSENTIAL ENGLISH

9 lessons per week: 90 minutes of study daily

For students who want to improve their everyday English abilities and build their strength in all the language skills, this program is ideal. These dynamic classes provide an integrated approach to speaking and listening practice, while improving your grammar and vocabulary. Your TEFL certified, native-American speaking teacher provides immediate feedback and guidance.

ESSENTIAL ENGLISH FOR JUNIORS (AGES 10 – 15)

9 lessons per week: 90 minutes of study daily

Students who begin language study at a younger age have a great head start on academic success. Essential English for Juniors is a fast-moving program that covers the fundamental English skills and more. Students will join other motivated young learners from around the world in highly interactive and engaging lessons with a curriculum specifically designed for younger students. Our supportive, expert teachers provide individual feedback and motivation that young learners love!

ESSENTIAL ENGLISH FOR YOUNG LEARNERS (AGES 7 – 9)

3 lessons per week: 60 minutes of study 3 days per week

Using colorful, engaging materials our Young Learners program introduces students to the exciting process of learning a new language in short, active lessons. Using English to discuss fun topics like animals, travel, food and oceans, students make measurable progress in short, concrete steps. Students will enjoy taking class with our engaging teachers and young learners from around the world!



For the adult learner looking for a more mature educational environment, FLS is pleased to present Study 30+. Located in the center of historic, cosmopolitan Boston, our program surrounds participants with supportive teachers, students with similar backgrounds and the stimulating environment of America's educational capital.

Studying with other adult English learners from around the world, students share experiences, make new connections and have the opportunity to explore Boston's fascinating cultural and sightseeing attractions. Students can visit Harvard University, experience a baseball game at Fenway Park or enjoy the collection at the Museum of Fine Arts. They are all an easy subway ride from our center!

We offer the flexibility for students to pick the schedule they prefer from four options:

- **Core English:** 3 hours of study per day
- **General English:** 4 hours of study per day
- **Intensive English:** 5 hours of study per day
- **Academic English:** 6 hours of study per day

OUR PROGRAM INCLUDES:



Daily English study with other students age 30 and over



Access to free **conversation clubs** and **volunteer activities**



Carefully selected **American homestay** families, ideally suited for mature students OR **shared student residence** accommodation



Concierge services, including a **dedicated housing staff**, **airport transfers**, and **counselors** to assist you in exploring all that Boston has to offer.



Specialized **elective classes and workshops** (as indicated per program)



Average **class size of 10** students



A wide selection of **weekday activities** and **weekend excursions**



Start the program on any **Monday**

Overview of FLS Levels

Our curriculum includes the perfect course for students at all levels of English proficiency, from beginner to near-native ability. Each FLS Level requires four weeks to complete. Check the chart below to see how you can expect to progress!

	FLS Level	Proficiency Outcomes	Correlations			
			TOEFL	IELTS	TOEIC	CEFR
Beginner	1 & 2	Students can make introductions, talk about daily activities and talk about clothes and food.	1-12	0 - 1.0	0 - 125	Pre-A1
	3 & 4	Students can talk about travel, vacations, shopping and families. Students can make comparisons, accept invitations and write short descriptions.	13 - 18	1.5	130 - 250	A1
	5 & 6	Students can talk about social media, accommodations, superstitions and predictions. Students can make commands, discuss possibilities and describe past events.	19 - 32	2.0 - 2.5	255 - 325	A2
Intermediate	7 & 8	Students can talk about traditions, special events, personal goals, and report conversations. Students can discuss hobbies, legends, reported events and hypothetical events.	33 - 41	3.0 - 3.5	330 - 395	B1
	9 & 10	Students can discuss personality types, sports, psychology, the environment and education. Students can write several connected paragraphs and read a young adult novel.	42 - 48	4.0	400-495	B1+
	11 & 12	Students can express regret and encouragement, discuss job qualifications, global issues and personal strengths and weaknesses. Students can write a brief essay and read a short novel.	49 - 61	4.5 - 5.0	500-585	B2
Advanced	13 & 14	Students can infer meaning, synthesize information from different sources and analyze an opinion. Students can understand authentic news broadcasts, summarize research and take accurate notes.	62 - 76	5.5 - 6.0	590-675	B2+
	15 & 16	Students can deal politely with disagreement, discuss solutions to challenging issues, and take part in a professional meeting. Students can read a novel used in college coursework and write a brief business proposal.	77 - 91	6.5 - 7.0	680-765	C1
	17 & 18	Students can discuss hopes and fears, beliefs, statistics, memory and innovation. Students can use persuasive techniques, employ academic strategies and skills and read material used in advanced college coursework.	92 - 120	7.5 - 9.0	770-990	C2

Concurrent Enrollment

For students who want to get a head start on earning a Bachelor's Degree, FLS has the perfect opportunity!



Our Concurrent Enrollment option allows students to earn transferable college credit while continuing to improve their English skills.

When students reach the required level, our counselors will work closely with them to choose appropriate classes that match the student's individual interests, academic plan and English proficiency level.

Students will then be enrolled in a semester-long class, studying side-by-side with American students. Students will not only be able to earn college credit, but gain the invaluable experience of taking a complete college course at an American institution.

Students may participate at several host campuses and partner institutions!

REQUIREMENTS AND CONDITIONS:

- Students must have the English proficiency level required by their chosen campus
- Students must enroll at the beginning of the semester and complete the course to earn credit
- Students may choose from a range of selected undergraduate courses
- F-1 students must maintain full-time enrollment (GE or above) at FLS while participating in this program



Contact your FLS representative for more details about currently available concurrent enrollment options!

High School Completion



The pathway to success begins with an American high school diploma! But many international students hoping to complete a diploma don't have the time or resources to attend a U.S. high school and are looking for alternate options. Others want to add a diploma from the U.S. to their current credentials.

Now at FLS, students can earn high school credit, complete their high school studies and earn their diploma. FLS and Penn Foster High School have joined forces to offer this program especially designed to get students on the right track for high school success.

Penn Foster is a fully accredited school founded in 1890. The school's diploma is accredited and accepted by colleges and universities across the United States. For two hours each day, students in the High School Completion program work with our supportive teaching staff and follow a customized curriculum to meet the exact requirements needed to complete their diploma.

Students come away with greater confidence in their academic ability and the skills needed to move on to college coursework!

SAMPLE CLASSES: (1 CREDIT PER CLASS)

- Earth Science
- Biology
- Human Relations
- American History

REQUIREMENTS & CONDITIONS

IN-PERSON OPTION

- Student must complete FLS Level 12 (or test above Level 12 upon arrival)
- Student will study a full-time program of four hours per day in FLS English classes
- Student will take an additional two hours per day of customized high school coursework
- Available at all FLS centers
- Average class size: 5

This program is available in both in-person and online options!

ONLINE OPTION

- Student must achieve FLS Level 12 on proficiency test or demonstrate comparable proficiency
- Student will study two hours per day of customized high school coursework
- Students may add additional online English study as needed
- Available in 6 am Pacific or 6 pm Pacific time slot
- Average class size: 5

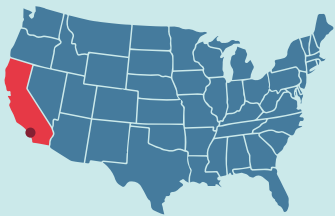


For In-Person Option we strongly recommend students bring their own laptop to facilitate their studies. If students do not have a laptop, FLS will provide one for use in the classroom.

Citrus College



LOS ANGELES, CALIFORNIA



WEATHER

- Summer Avg: 28°C
- Winter Avg: 18°C

Los Angeles is a trend-setting global metropolis with a fascinating history and rich cultural heritage. The “City of Angels” is home to picture-perfect beaches and 75 miles of sunny coastline. Regarded as the entertainment capital of the world, Los Angeles is home to legendary Hollywood movie studios, responsible for the most popular movies in the world. L.A. also boasts a thriving theater, music and gallery scene. Celebrities can often be seen shopping the streets of Beverly Hills, including the world-famous Rodeo Drive.

Located in Los Angeles County near the foothills of the San Gabriel Mountains, Citrus College offers a combination of suburban comfort along with access to all of L.A.’s attractions. Having served students for over 100 years, Citrus College is one of California’s first colleges and continues to expand its educational mission.

After completing their studies at Citrus College, students can transfer to prestigious institutions such as UCLA to complete their degrees.

School Type: Community College

Enrollment: 14,000



CAMPUS FACILITIES

- Cafeteria
- Computer Lab
- Free WiFi
- Golf Range
- Library
- Tennis Courts
- Track & Field
- Smartboards



PROGRAMS OFFERED

- Core English
- General English
- Intensive English
- Academic English
- TOEFL Preparation
- High School Completion
- Discover California



UPP Partner School

Citrus College (contd.)



POPULAR MAJORS

- History
- Business Administration
- Liberal Arts
- Psychology
- Visual & Performing Arts



ACCOMMODATIONS

- **Homestay**
Minimum age: 15
16 meals per week



EXPLORING & GETTING AROUND



ACTIVITIES

- Disneyland
- Universal Studios
- Hollywood
- Downtown L.A.
- Old Town Pasadena



TRANSPORTATION

- **Bus:** Foothill Transit on campus
- **Light rail:** Metro Gold Line adjacent to campus



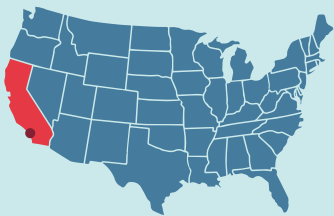
AIRPORT PICKUP

- Los Angeles International Airport (LAX)
Distance: 67km





ORANGE COUNTY, CALIFORNIA



WEATHER

- Summer Avg: 26°C
- Winter Avg: 20°C

With 42 miles of world-famous beaches, legendary theme parks and enough shopping destinations to satisfy even the most dedicated shopper, it's no wonder that visiting Orange County is the ultimate Southern California experience. "The OC," as local residents call it, blends a casual, active lifestyle with laid-back sophistication. This unique lifestyle was integral to the development and culture of professional surfing, and the perfect weather continues to bring millions of visitors every year.

Saddleback College has been the first choice for higher education in South Orange County since 1968. The beautifully landscaped campus is set on a hilltop surrounded by the gorgeous neighborhoods and shopping districts of Mission Viejo. Known as one of California's safest cities, Mission Viejo provides comfortable surroundings near some of Southern California's greatest attractions.

Saddleback College offers more than 190 different degrees and certificates, giving students an excellent foundation to transfer to UC Irvine or other University of California or California State University schools.

School Type: Community College

Enrollment: 28,000



CAMPUS FACILITIES

- Cafeteria
- Library
- McKinney Theatre
- Free WiFi
- Smartboards
- Tennis Courts



PROGRAMS OFFERED

- Core English
- General English
- Intensive English
- Academic English
- TOEFL Preparation
- High School Completion



Saddleback College (contd.)



POPULAR MAJORS

- Liberal Arts
- Health Sciences
- Business
- Psychology
- Environmental Science



VOLUNTEERING

- Mission Viejo Library
- Irvine Senior Services
- G.I. Joe Search and Rescue
- Boys & Girls Club of Laguna Beach



ACCOMMODATIONS

- **Homestay**
Minimum age: 15
16 meals per week



EXPLORING & GETTING AROUND



ACTIVITIES

- Disneyland
- Laguna Beach
- San Diego Zoo
- Whale Watching
- MLB Baseball Game



AIRPORT PICKUP

- Los Angeles International Airport (LAX)
Distance: 91km



TRANSPORTATION

- Bus: OCTA on campus
- Light rail: Metrolink line, 1 mile from campus



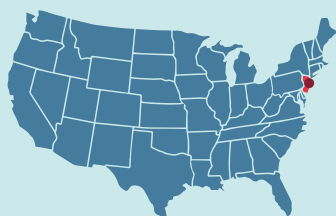
28000 Marguerite Parkway, Village 23-2
Mission Viejo, CA 92692



@FLSInternationalSaddleback
@flsinternational



NEW YORK CITY, NEW YORK



WEATHER

- Summer Average: 27°C
- Winter Average: 6°C

As America's largest city, it's no wonder that New York City has been described as the cultural, business, and media capital of the world. In this metropolis, students have the chance to experience everything from the Metropolitan Museum of Art to the fashionable shops of Fifth Avenue and the financial district of Wall Street. As one of the world's most diverse cities, the "Big Apple" always offers something new to see and do!

Located in Manhattan's exclusive Upper East Side, just a few blocks from Central Park, Marymount Manhattan College is a private liberal arts college founded by the Religious of the Sacred Heart of Mary. The college provides modern student accommodations in two conveniently located high rise buildings in New York's Midtown and East Village neighborhoods. Students can easily explore all of the attractions of Manhattan with the city's world-famous subway system.

Our program at Marymount Manhattan College provides an exciting chance to get a sample of big city life and put yourself in the center of 'the city that never sleeps'.

School Type: Private liberal arts college

Enrollment: 2,000



CAMPUS FACILITIES

- 4th Floor Cafe
- Shanahan Library
- Lang Theater
- Lang Center for Producing
- Hewitt Gallery of Art
- Fitness Centers
- Free WiFi Access



PROGRAMS OFFERED

- Core English
- Discover New York



UPP Partner School

Marymount Manhattan College (contd.)



POPULAR MAJORS

- Visual & Performing Arts
- Business
- Marketing
- Communications
- Journalism



VOLUNTEERING

- Saint Aedan's Convent & Migrant Center
- Garden State Episcopal Community Development
- Saint Peter's University Campus Kitchen



ACCOMMODATIONS

- **Homestay**
Minimum age: 15
16 meals per week
- **Student Residence**
Minimum age: 15
19 meals per week



EXPLORING & GETTING AROUND



ACTIVITIES

- Times Square
- Central Park
- Statue of Liberty
- Metropolitan Museum of Art
- One World Trade Center



TRANSPORTATION

- MTA Subway & Bus transportation provide access to New York City and the surrounding regions.



AIRPORT PICKUP

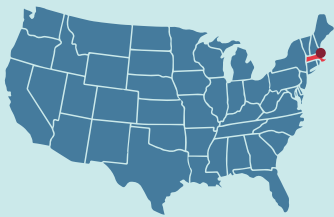
- John F. Kennedy International Airport (JFK)
Distance: 32km
- LaGuardia International Airport (LGA)
Distance: 15km
- Newark International Airport (EWR)
Distance: 34km



Boston Commons



BOSTON, MASSACHUSETTS



WEATHER

- Summer Average: 21°C
- Winter Average: 6°C

One of America's most attractive cities, Boston offers a unique blend of historical sites, such as the fascinating Freedom Trail, and modern attractions, like the innovative Massachusetts Institute of Technology. Considered America's education capital, Boston hosts the world's largest college student population. Prestigious universities such as Harvard, MIT, Tufts and the University of Massachusetts are just a few of the many educational institutions in and around the city. Boston is also home to some of the best sports teams in the nation, giving students an opportunity to catch the Red Sox at Fenway Park or experience American football at a New England Patriots game.

Our Boston Commons center is ideally located in the bustling Downtown district, overlooking America's oldest park, Boston Common, considered by local residents to be the heart and pulse of the city. Students can step outside to hop on the subway at centrally located Park Street station or stroll across the park for picturesque views of the Massachusetts State House.

Our partner agreements with numerous nearby colleges and universities give students many options for pursuing a Bachelor's or Master's degree after completing their studies at Boston Commons.

School Type: Downtown city center

Enrollment: 150



CAMPUS FACILITIES

- Student Kitchen
- Free WiFi
- Smartboards
- Student Lounge



PROGRAMS OFFERED

- Core English
- General English
- Intensive English
- Academic English
- TOEFL Preparation
- IELTS Preparation
- SAT Preparation
- Study 30+
- Executive Business English
- Concurrent Enrollment
- High School Completion
- Business Certificate Program
- Discover Boston



UPP Partner School

Boston Commons (contd.)



POPULAR MAJORS

- Business Administration
- Public Administration
- Health Sciences
- Psychology
- Communications



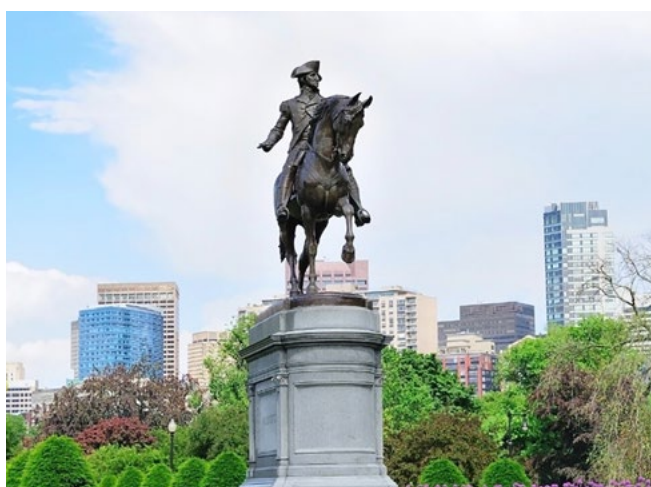
VOLUNTEERING

- Community Servings
- Haley House
- Greater Boston Food Bank



ACCOMMODATIONS

- **Homestay**
Minimum age: 15
16 meals per week
- **International Guest House**
Minimum age: 16
14 meals per week



EXPLORING & GETTING AROUND



ACTIVITIES

- Harvard University & Harvard Square
- Six Flags New England
- Museum of Fine Arts
- Boston Red Sox Games
- Newbury Street Shopping



LOCAL TRANSPORTATION

- **Subway:** Steps away from the campus
- **Bus:** Covers the Greater Boston area
- **Rail:** Connects Boston to neighboring cities



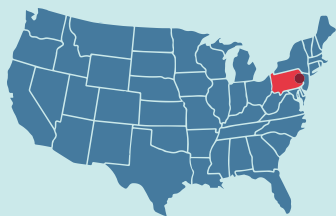
AIRPORT PICKUP

- Boston Logan International Airport (BOS)
Distance: 6km

Chestnut Hill College



PHILADELPHIA, PENNSYLVANIA



WEATHER

- Summer Average: 27°C
- Winter Average: 5°C

Famous as the birthplace of The United States, Philadelphia is a diverse, urban destination that preserves four centuries of American history and architecture, as well as fascinating museums and endless shopping. While visiting the “City of Brotherly Love,” students can see such historic attractions as the Liberty Bell and Independence Hall, then get a taste of some of Philadelphia’s many culinary flavors, like the renowned Philly Cheesesteak Sandwich, from dozens of bakers, farmers, and restaurants at Reading Terminal Market.

A private Catholic school, Chestnut Hill College is located on the outskirts of the city in the beautiful Germantown area. The college was founded in 1924 and its striking Gothic buildings have earned it a spot on the National Register of Historic Places. The campus houses modern facilities integrated with its historic buildings to meet the needs of today’s students.

Students may complete their Bachelor’s Degree at Chestnut Hill in dozens of fields and go on to pursue a variety of Master’s Degrees.

School type: Private Catholic College

Enrollment: 1,300



CAMPUS FACILITIES

- Cafeteria
- Library
- Computer Lab
- Free WiFi
- Gym
- Pool
- Shuttle Bus to Philadelphia train
- Smartboards
- Student Lounge



PROGRAMS OFFERED

- Core English
- General English
- Intensive English
- Academic English
- TOEFL Preparation
- IELTS Preparation
- Concurrent Enrollment



UPP Partner School

Chestnut Hill College (contd.)



POPULAR MAJORS

- Business
- Biology
- Health Sciences
- Psychology
- Social Sciences



VOLUNTEERING

- Chestnut Hill Elementary
- Meadowview Rehabilitation Center
- Teens Inc.



ACCOMMODATIONS

- **Homestay**
Minimum age: 15
16 meals per week
- **Student Residence**
Minimum age: 18
19 meals per week



EXPLORING & GETTING AROUND



ACTIVITIES

- Historic Philadelphia
- Philadelphia Museum of Art
- Six Flags Great Adventure
- Philadelphia Zoo
- Washington, D.C.



TRANSPORTATION

- Campus shuttle to Philadelphia trains
- SEPTA train and bus service covers the Philadelphia area



AIRPORT PICKUP

- Philadelphia International Airport (PHL)
Distance: 37km
- Newark International Airport (EWR)
Distance: 138km



9601 Germantown Ave.
Philadelphia, PA 19118



@FLSInternationalCHC
@flsinternational

Accommodation: Homestays



Staying with an American host family is one of the best ways for students to improve their English quickly and effectively. Living with a host family allows students to experience the American lifestyle at a personal level. Students participate in family activities, practice their English with family members and build long-lasting connections and relationships.

Welcoming homestays are available at all FLS campuses. Each home is located within easy travel distance of the campus and provides a comfortable and friendly environment.

For most students, FLS recommends our twin room homestay option: Two students with different native languages share a bedroom, providing additional opportunities for English practice. A single room option is also available.

STUDENT RESIDENCES:

Student Residences are available at select FLS Campuses for those seeking a more independent lifestyle. Contact us for more information.

Each host family is carefully selected by FLS. Our dedicated housing staff visit and interview each family personally, ensuring that each home will meet student expectations. Many of our families have years of experience in hosting international students and introduce their neighbors and friends to our program.



EACH HOMESTAY INCLUDES:



16 meals per week (breakfast and dinner each weekday; breakfast, lunch and dinner on weekends)



Access to laundry facilities in the home



A place to study



WiFi Internet



Access to all family common areas

Volunteering Opportunities



Now more than ever, students are looking for ways to reach out and contribute to the community around them.

Volunteering is not only a chance to assist others and connect with the community, but is also a great way to meet Americans and gain valuable real-world experience.

Selective colleges and universities are searching for well-rounded candidates when making admission decisions. Having experience in community assistance programs is an excellent way to round out a student's background and show their diverse interests. Not only that, but volunteering often provides memorable experiences that can last a lifetime.



FLS has carefully selected the perfect volunteer opportunities for international students. Participants in the program will gain practice in speaking English and valuable insights into American culture in a structured environment.

Each FLS center offers unique volunteer opportunities based on the specific requirements of their community. We work with organizations from food banks and women's shelters to schools and convalescent homes, offering a wide range of experiences.

Best of all, students enrolled in FLS classes can participate in these opportunities at no additional charge!

Preparation and Orientation



PREPARATION

While students can easily buy most things they need in the U.S., it's more convenient if the student arrives with essential items. We recommend students consider packing these items:

- Spending money (\$200 - \$250 per week)
- Laptop or tablet
- Any medications needed
- Notebook or folder
- Good walking shoes
- Electronic adaptors
- Pens and pencils
- Sunblock and sunglasses
- Small backpack
- Credit cards
- Umbrella
- Swimsuit
- Smartphone
- Toiletries
- Camera

ORIENTATION

Each student's first day begins with a complete orientation. This includes a placement test, overview of school policies, campus tour and introduction to school staff. The first day also includes registration and enrollment. To be ready for this, students should bring the specific items listed in the box on this page.

After the first day, students will be ready to get the most from their FLS experience!

SAMPLE SCHEDULE*

After the first day, each student's schedule will follow a regular pattern. Here's a sample schedule of a typical school day.

TIME	ACTIVITY
9:00 am - 11:00 am	Core Class
11:00 am - 11:15 am	Break
11:15 am - 12:15 pm	Core Class
12:15 pm - 1:15 pm	Lunch
1:15 pm - 2:15 pm	Academic Workshop
2:15 pm - 2:20 pm	Break
2:20 pm - 3:20 pm	English Through Film Elective
3:20 pm - 3:25 pm	Break
3:25 pm - 4:25 pm	Practical Grammar Elective
4:30 pm	Excursion to Downtown Shopping

WHAT TO BRING ON THE FIRST DAY:

- ☐ Passport and Visa
- ☐ I-20 (if applicable)
- ☐ Medical Insurance documentation
- ☐ Form of payment for tuition and any other unpaid fees (if applicable)

* Please note: this schedule is only a sample. The actual schedule for each student's program may vary.

Keeping Students Safe During Covid

At FLS we want our students to have the best educational experience, and even more for our students to have a safe and fulfilling cultural and living experience.

WE ARE TAKING SIGNIFICANT STEPS TO ENSURE A SAFE ENVIRONMENT FOR OUR STUDENTS SO THEY ONLY NEED TO FOCUS ON THEIR STUDIES.

HEIGHTENED AND FREQUENT DEEP CLEANING PROCEDURES



HIGH TOUCH SURFACES

- Desks
- Chairs
- Doorknobs
- Light switches
- Restrooms
- Classroom equipment
- Classrooms

SANTIZATION, MASKS AND DISTANCING

- Touchless hand sanitizers
- Masks are required
- Desks arranged for social distancing



KEEPING STUDENTS SAFE IN THE CLASSROOM

NEW FILTER INSTALLATION

- Designed to filter the maximum amount of airborne particles and viruses
- Air purifying stations

UPGRADED AIR FILTRATION



SAFE LEARNING



MINIMIZE CONTACT BETWEEN CLASSES

- Staggered Start Times
- Learning Pods
- Outdoor Electives

HEALTH CHECKS



TEMPERATURE CHECKS

- Before entry to the school
- Students with elevated temperatures or who feel ill will not be granted entry to the school
- Virtual webinars available for those who are not able to attend in person

NEW FILTER INSTALLATION

- Protective screens installed at various locations throughout the school to allow for safe face-to-face interaction
- Most lounge furniture removed from common areas
- Appointments for one-to-one office hours or virtual calls over the phone, Skype, or Zoom

KEEPING STUDENTS SAFE IN OFFICES AND COMMON AREAS



Exclusive Features

FLS is truly like no other language school, with unsurpassed customer service and an outstanding curriculum. Check out some of our unique features!

CUSTOM TEXTBOOKS



Many levels use Patterns, our own custom-made textbooks, developed specifically with FLS students in mind. These texts use a modular format that allows students to master new English concepts, vocabulary terms and grammar skills each week. Throughout the texts, students meet characters who encounter different aspects of American culture brought to life through audio and video elements.

A new unit is covered each week, including many chances for student interaction and concluding with a project in which students prepare and present material to the class.

This contemporary, interactive series helps students take their English to impressive new levels!

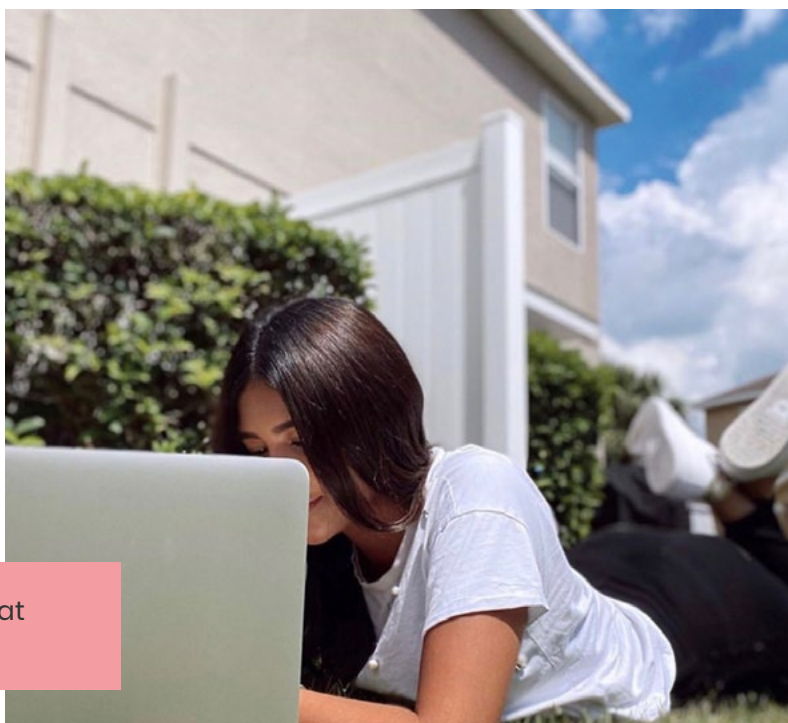
ENGLISH EVERYWHERE

English Everywhere centers on the **Hot Sheet**, a quick reference for all the key language points for that week.

Each Hot Sheet focuses on a different theme, with conversation starters, songs and movies that explore the theme in greater detail. Students are encouraged to keep their Hot Sheets with them and refer to them throughout the week.

With FLS International, you really can learn English Everywhere!

Students can download and share Hot Sheets at **www.fls.net**.



CONCIERGE SERVICE

Our staff truly goes the extra mile to ensure that each student has the best possible experience. School personnel are well-versed in helping students adjust to life in the United States, whether it's opening a bank account, finding a great restaurant or getting a driver's license.

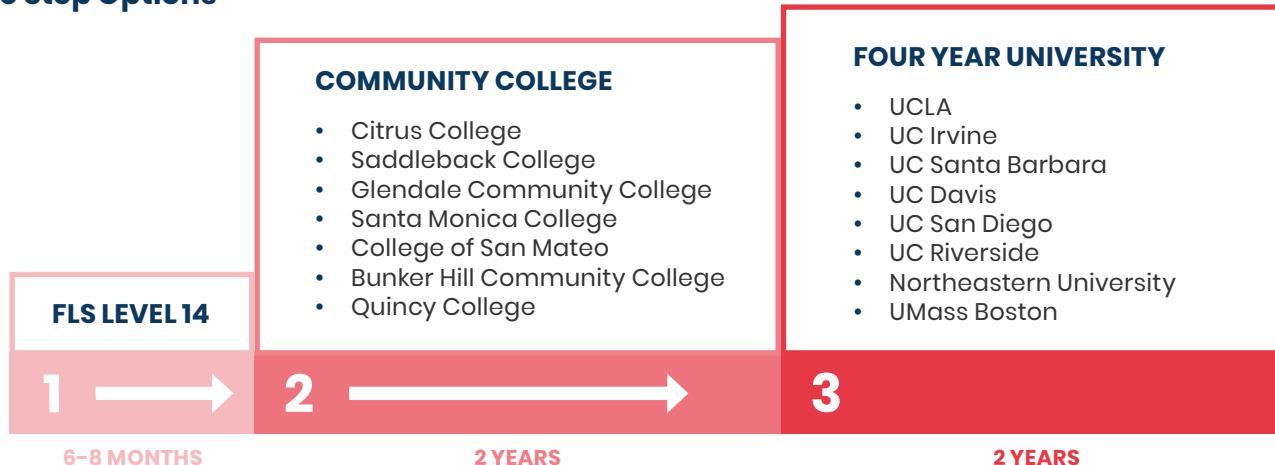
Because FLS operates all of our own school services, we're able to take quick, responsive action to student requests. If a student has concerns about housing, an activity, or any school-related issue, we have personnel available around the clock, ready to quickly and effectively address the matter.

Pathways at FLS

There are many different pathways to take to earn an American university degree. FLS International works with each student to find the best path based on the student's background, interests and goals.

SAMPLE PATHWAYS

Three Step Options

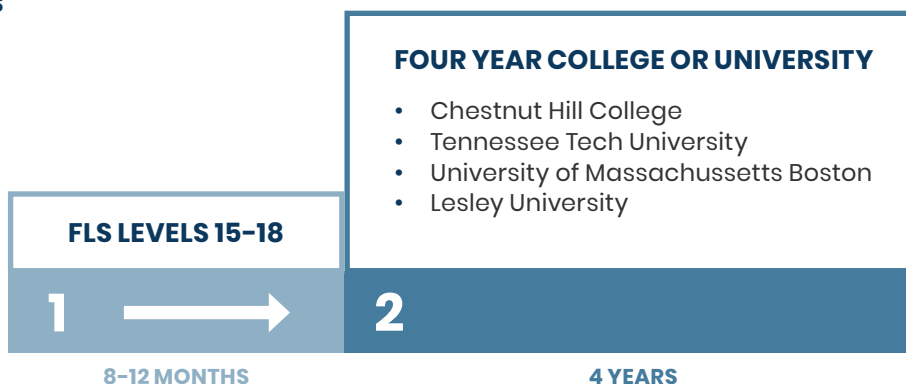


Students begin their educational journey at an **FLS center** where students will improve their English proficiency and gain the skills needed to succeed in the American academic system. Students who complete Level 14 may then transfer to a community college and complete an Associates' Degree. Afterwards, students can transfer to a four-year university to complete a Bachelor's Degree. In order to transfer into a school in the California State University system, students must maintain a GPA of 2.0 or better while completing their Associate's Degree. Popular campuses include CSU Fullerton and CSU San Diego.

Students wishing to enter the prestigious University of California system must maintain a GPA of 3.0 or better while completing their Associate's Degree in order to transfer to such schools as UCLA and UC Santa Barbara.

As with the UC system, students must maintain a GPA of 3.0 or better to transfer to schools in the University of Massachusetts system. Many other campus options across the country are also available.

Two Step Options



Students may choose to complete a more advanced FLS level (15-18, depending upon school) and transfer directly to a 4-year college or university. Our partner institutions work closely with FLS to ensure that students have a seamless transfer.

Universal Placement Program

Universal Placement Program (UPP) is the placement division of FLS International and our mission is to help get you into the best schools in the USA. For over 30 years we have helped thousands of students to gain admission to high schools, community colleges, top-ranked universities, graduate programs and specialty schools. Our simple, fast, free service ensures you access to achieve your educational dreams!

I'm looking for a high school.

UPP partners with over 40 top high schools for grades 9-12 with both boarding and homestay options.

I want to go to a good university but my English (or GPA) is not great.

UPP has over 100+ pathway partners including over 80 that accept FLS level completion instead of the TOEFL or IELTS exam. You can study English at FLS or one of our on-campus ESL partners. Even if your grades are poor, we can get you conditional offers to universities before you leave your home country.

My English and GPA are fine. I want a top-ranked school!

UPP has many universities and programs ranked in the top 150. If you already have a good TOEFL or IELTS score, we can help with direct admission into a great program.

I'm interested in graduate programs.

We have a wide variety of graduate schools offering the most popular majors such as MBA, Computer Science, Engineering, Big Data, and Health Sciences. Additionally, nearly all of our programs offer opportunities for CPT, OPT, and internships with American companies.

I'm looking for a special program.

UPP partners with a number of "Specialty Schools" offering diverse programs including Acting, Culinary Arts, Fashion Design, Creative Design, Music Performance, Flight Training, and even Professional Golf!

Do you offer scholarships?

We certainly do! Many of the UPP schools have a variety of scholarship options for international students. Requirements are usually based on GPA, English ability, nationality, and essay submission.

I need help with housing.

At many of our UPP schools, we offer the "American School Year" (ASY) program, which allows students to reside in single room accommodation during their academic term.



How to use Universal Placement Program to help with your admission.

Step 1 Contact FLS and complete the UPP information request form

- UPP will professionally evaluate your information and present a comprehensive study plan including assured school acceptance.

Step 2 Complete the UPP application

- Our simple and free process (for students attending FLS) allows you to easily apply to any of our partner programs & institutions.

Step 3 Receive your admission (Full or Conditional) and I-20

- The UPP process is very fast and admissions can be granted as quickly as 2 weeks from the receipt of the application.



For comprehensive school profiles, recommendations, and much more information, visit the UPP website at www.uppcolleges.com

Universal Placement Program Schools List & Map

High Schools

WEST

Rancho Solano Preparatory School	Phoenix, Az
Seton Catholic Preparatory	Chandler, AZ
Verde Valley School	Sedona, AZ
Army & Navy Academy	Carlsbad, CA
Arroyo Pacific Academy	Arcadia, CA
Bradshaw Christian Academy	Sacramento, CA
Fairmont Private Schools	Anaheim, CA
Quarry Lane School	Dublin, CA
Redwood Christian School	Castro Valley, CA
Southwestern Academy	San Marino, CA
St. John Bosco High School	Bellflower, CA
Riverstone International School	Boise, ID
Canyonville Academy	Canyonville, OR
Kennedy Catholic High School	Burien, WA

EAST

Lincoln Academy	Newcastle, ME
Thornton Academy	Saco, ME
MacDuffie School	Granby, MA
Newman School	Boston, MA
Wilbraham and Monson Academy	Wilbraham, MA
High Mowing School	Wilton, NH
Lawrence Woodmere Academy	Woodmere, NY
Leman Manhattan Preparatory Academy	New York, NY
Saint John's High School	West Islip, NY
Grier School	Birmingham, PA
Lyndon Institute	Lyndon Center, VT
Stowe High School	Stowe, VT

SOUTH

Lake Mary Preparatory School	Lake Mary, FL
North Broward Preparatory School	Fort Lauderdale, FL
Windermere Preparatory School	Windermere, FL
Ben Lippen School	Columbia, SC

MIDWEST

Guerin College Prep High School	Chicago, IL
Kokomo High School	Kokomo, IN
St. Croix Lutheran High School	St. Paul, MN
Chaminade College Preparatory School	St. Louis, MS
The Village School	Houston, TX
Green Lake High School	Green Lake, WI
Winnebago Lutheran Academy	Fond du Lac, WI

2-Year Schools

WEST

- Cañada College
- **Citrus College**
- College of Marin
- **College of San Mateo**
- Cypress College
- De Anza College
- El Camino College
- Foothill College
- **Glendale Community College**
- MiraCosta College
- Mission College
- Orange Coast College

Redwood City, CA
Glendora, CA
Kentfield, CA
San Mateo, CA
Cypress, CA
Cupertino, CA
Torrance, CA
Los Altos Hills, CA
Glendale, CA
Oceanside, CA
Santa Clara, CA
Costa Mesa, CA

- **Saddleback College**
- Santa Barbara City College
- **Santa Monica College**
- Skyline College
- Leeward Community College
- **College of Southern Nevada**
- Lane Community College
- Snow College
- Edmonds Community College
- **Green River College**
- Highline College
- North Seattle College
- **Seattle Central College**
- Shoreline Community College
- Spokane Community College
- Whatcom Community College
- Northwest College

Mission Viejo, CA
Santa Barbara, CA
Santa Monica, CA
San Bruno, CA
Pearl City, HI
Las Vegas, NV
Eugene, OR
Ephraim, UT
Lynnwood, WA
Auburn, WA
Des Moines, WA
Seattle, WA
Seattle, WA
Shoreline, WA
Spokane, WA
Bellingham, WA
Powell, WY

EAST

- **Bunker Hill Community College**
- Benjamin Franklin Institute of Technology
- **Dean College**
- Fulton Montgomery Community College

Boston, MA
Boston, MA
Franklin, MA
Johnstown, NY

SOUTH

Broward College

Davie, FL

MIDWEST

- **Elgin Community College**
- Illinois College

Elgin, IL
Jacksonville, IL

4-Year Schools & Graduate Schools

WEST

- Northern Arizona University
- California Lutheran University
- Cal State University Bakersfield
- Cal State University Dominguez Hills
- **Cal State University Fresno**
- **Cal State University Sacramento**
- Cal State University San Marcos
- National University
- University of La Verne
- Colorado State University
- Montana State University
- University of Nevada, Reno
- Oregon State University
- Westminster College
- **City University**

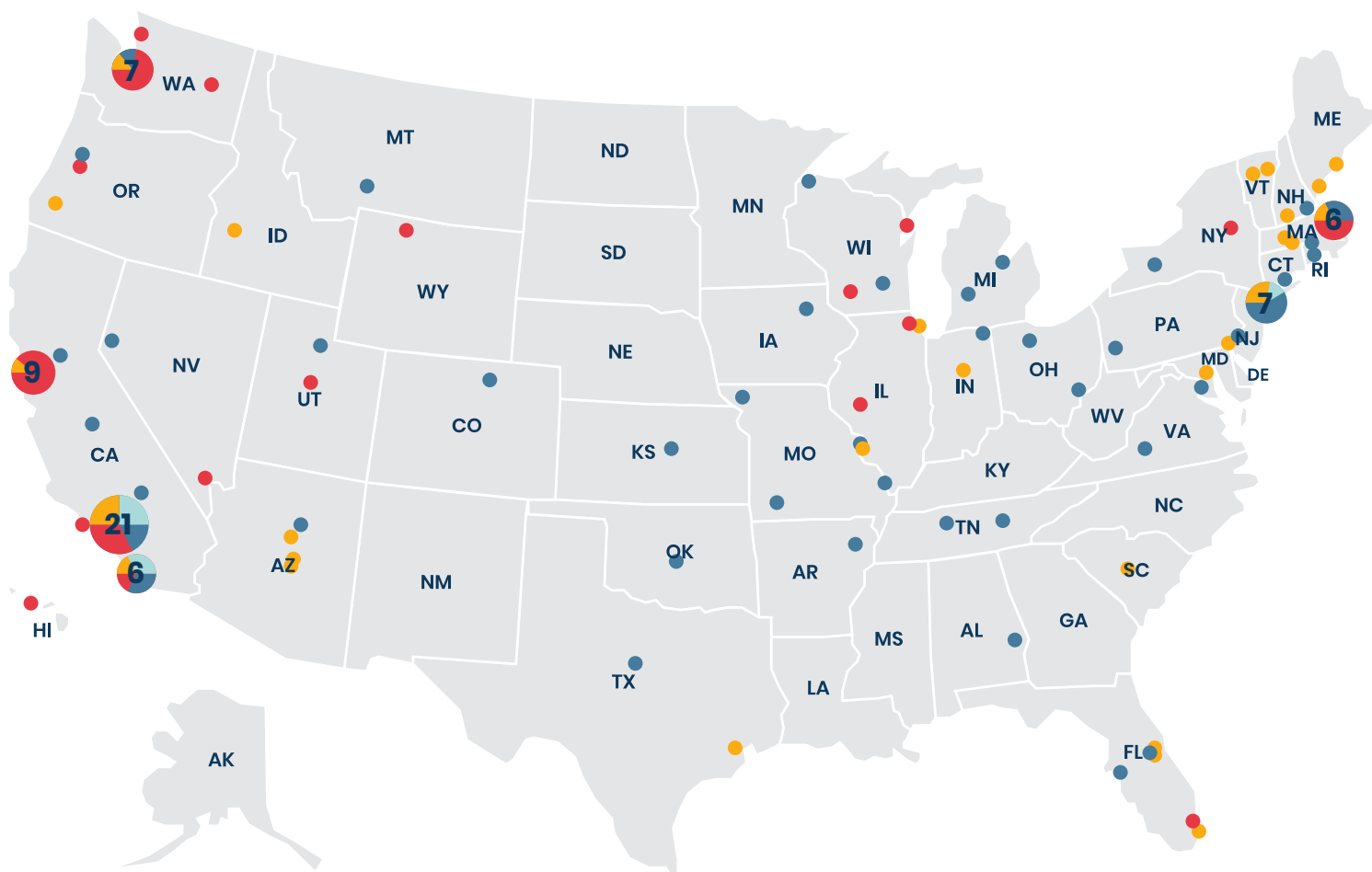
Flagstaff, AZ
Thousand Oaks, CA
Bakersfield, CA
Dominguez Hills, CA
Fresno, CA
Sacramento, CA
San Marcos, CA
San Diego, CA
La Verne, CA
Fort Collins, CO
Bozeman, MT
Reno, NV
Corvallis, OR
Salt Lake City, UT
Seattle, WA

EAST

- University of Bridgeport
- University of New Haven
- American University
- **Fisher College**
- Lesley University
- Massachusetts College of Pharmacy & Health Sciences
- Dean College
- **Southern New Hampshire University**
- **Saint Peter's University**

Bridgeport, CT
New Haven, CT
Washington, DC
Boston, MA
Cambridge, MA
Boston, MA

Franklin, MA
Manchester, NH
Jersey City, NJ



- Berkeley College
- New York Institute of Technology
- SUNY Geneseo
- Chatham University
- **Chestnut Hill College**
- Johnson and Wales University

SOUTH

- Auburn University
- University of Central Florida
- University of South Florida
- **Tennessee Tech University**
- University of Tennessee**
- Hollins University

MIDWEST

- Arkansas State University
- Trine University
- Upper Iowa University
- Kansas State University Polytechnic**
- Aquinas College
- Saginaw Valley State University

New York, NY
New York, NY
Geneseo, NY
Pittsburgh, PA
Philadelphia, PA
Providence, RI

Auburn, AL
Orlando, FL
Tampa, FL
Cookeville, TN
Knoxville, TN
Roanoke, VA

Jonesboro, AR
Angola, IN
Fayette, IA
Salina, KS
Grand Rapids, MI
University Center, MI

- Drury University
- Northwest Missouri State University
- Southeast Missouri State University
- Saint Louis University**
- University of Findlay
- **Ohio University**
- Oklahoma City University
- Texas Wesleyan University
- University of Wisconsin, Superior
- University of Wisconsin, Whitewater

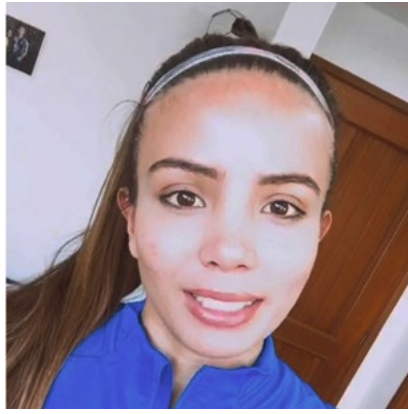
Springfield, MS
Maryville, MS
Cape Girardeau, MS
St. Louis, MS
Findlay, OH
Athens, OH
Oklahoma City, OK
Dallas, TX
Superior, WI
Whitewater, WI

Specialty Schools

- California Flight Academy
- Cinema Makeup School
- **Los Angeles Film School**
- Musicians Institute**
- **New York Film Academy**
- Professional Golfers Career College
- UC Irvine Extension**
- Full Sail University**
- New York Film Academy**

El Cajon, CA
Hollywood, CA
Hollywood, CA
Hollywood, CA
Hollywood, CA
Temecula, CA
Irvine, CA
Winter Park, FL
New York, NY

Testimonials



To view our video testimonials please **tap or click here**



I have been in many schools but at FLS International administration staff really cares if students do well and go to school. In other schools, they don't care if you come or not. I also like the fact that everything is well organized. On one hand, education is demanding and on a high level on the other, you can ask for non-standard things and they will be done. This is also the first time I have attended activities in any school and it was great to see that they actually care if we are having a good time...My progress is visible. I want to say something about homestay. The prices are affordable and they really listen to what you need. So you can live almost any way you like.

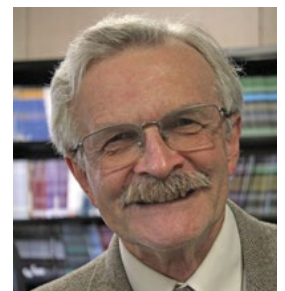


—**Abdalla**, FLS Student (*Saudi Arabia*)



Southern California is an amazing mix of diverse cultures that gives students an unforgettable exposure to many aspects of America. At FLS you will be part of a supportive community that will help you to be a better English speaker, grow as a person, and make progress toward your life goals.

—**Dr. Brent Davis**, FLS Instructor (*Citrus Campus*)
Ph.D. in Speech Science and Technology, USC



2021 Start Dates

These are the preferred start dates for 2021, but students can start *any Monday*.

PREFERRED START DATES

January 4 – 29
 February 1 – 26
 March 1 – 25
 March 29 – April 23
 April 26 – May 21
 May 24 – June 18
 June 21 – July 16
 July 19 – Aug. 13
 August 16 – Sept. 10
 September 13 – Oct. 7
 October 11 – Nov. 5
 November 8 – Dec. 3
 December 6 – Dec. 30
 January 3 – 28, 2022

JANUARY							FEBRUARY							MARCH						
S	M	T	W	T	F	S	S	M	T	W	T	F	S	S	M	T	W	T	F	S
					1	2		1	2	3	4	5	6		1	2	3	4	5	6
3	4	5	6	7	8	9	7	8	9	10	11	12	13	7	8	9	10	11	12	13
10	11	12	13	14	15	16	14	15	16	17	18	19	20	14	15	16	17	18	19	20
17	18	19	20	21	22	23	21	22	23	24	25	26	27	21	22	23	24	25	26	27
24	25	26	27	28	29	30	28							28	29	30	31			
31																				
APRIL							MAY							JUNE						
S	M	T	W	T	F	S	S	M	T	W	T	F	S	S	M	T	W	T	F	S
					1	2							1			1	2	3	4	5
4	5	6	7	8	9	10	2	3	4	5	6	7	8	6	7	8	9	10	11	12
11	12	13	14	15	16	17	9	10	11	12	13	14	15	13	14	15	16	17	18	19
18	19	20	21	22	23	24	16	17	18	19	20	21	22	20	21	22	23	24	25	26
25	26	27	28	29	30		23	24	25	26	27	28	29	27	28	29	30			
							30	31												
JULY							AUGUST							SEPTEMBER						
S	M	T	W	T	F	S	S	M	T	W	T	F	S	S	M	T	W	T	F	S
					1	2	1	2	3	4	5	6	7				1	2	3	4
4	5	6	7	8	9	10	8	9	10	11	12	13	14	5	6	7	8	9	10	11
11	12	13	14	15	16	17	15	16	17	18	19	20	21	12	13	14	15	16	17	18
18	19	20	21	22	23	24	22	23	24	25	26	27	28	19	20	21	22	23	24	25
25	26	27	28	29	30	31	29	30	31					26	27	28	29	30		
OCTOBER							NOVEMBER							DECEMBER						
S	M	T	W	T	F	S	S	M	T	W	T	F	S	S	M	T	W	T	F	S
					1	2		1	2	3	4	5	6				1	2	3	4
3	4	5	6	7	8	9	7	8	9	10	11	12	13	5	6	7	8	9	10	11
10	11	12	13	14	15	16	14	15	16	17	18	19	20	12	13	14	15	16	17	18
17	18	19	20	21	22	23	21	22	23	24	25	26	27	19	20	21	22	23	24	25
24	25	26	27	28	29	30	28	29	30					26	27	28	29	30	31	
31																				

SCHOOL HOLIDAYS

Jan. 1 New Year's Day
 Jan. 18 Martin Luther King Day
 Feb. 15 President's Day
 Mar. 26 In-Service Day
 Apr. 2 Good Friday
 May 31 Memorial Day
 July 5 Independence Day
 (Observed)
 Sept. 6 Labor Day
 Oct. 8 In-Service Day
 Nov. 25 & 26 Thanksgiving
 Dec. 24 & 25 Christmas
 Dec. 31 New Year's Day
 (Observed)

ONLINE PROGRAMS START EVERY MONDAY!

LOCATIONS KEY

	Core English	General English	Intensive English	Academic English	TOEFL Prep	IELTS Prep	SAT Prep	Concurrent Enrollment	High School Completion	Executive Business	One-to-one Tutoring
Citrus College	■	■	■	■	■				■		■
Saddleback College	■	■	■	■	■				■		■
Chestnut Hill College	■	■	■	■	■	■		■	■		■
Marymount Manhattan College	■										■
Boston Commons	■	■	■	■	■	■	■	■	■	■	■

Please visit www.fls.net/terms-and-conditions in order to review our full Terms and Conditions.






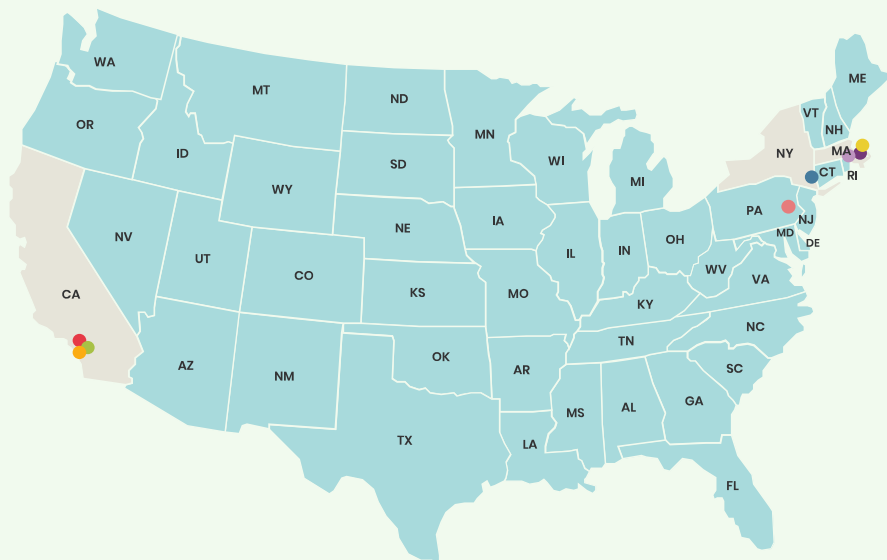
INTERNATIONAL

Established in 1986

FLS INTERNATIONAL
680 E. Colorado Blvd.
Ste. 180, Second Floor
Pasadena, CA 91101

Phone: +1 626. 795. 2912
Fax: +1 626. 795. 5564
Email: fls@fls.net
Website: www.fls.net

 @FLSPasadena
 @FLS International
 FLS International



Year-Round Campuses:

1. Citrus College
2. Boston Commons
3. Chestnut Hill College

Summer Campuses:

3. Saddleback College
4. Marymount Manhattan College

Study Tour Campus:

5. Cal State Long Beach
6. Suffolk University
7. Harvard University

