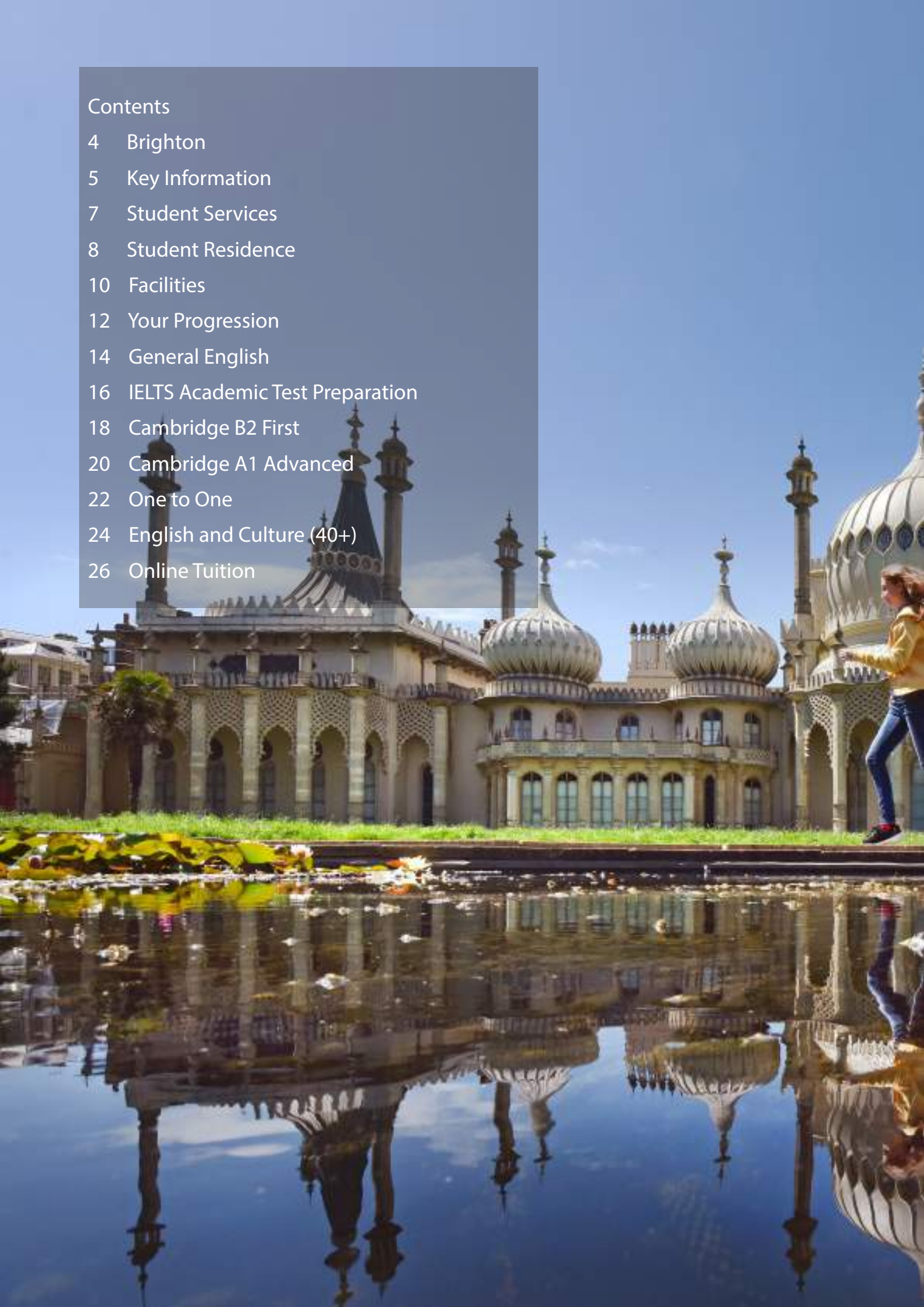




Brighton Language College 2021 Course Guide

Contents

- 4 Brighton
- 5 Key Information
- 7 Student Services
- 8 Student Residence
- 10 Facilities
- 12 Your Progression
- 14 General English
- 16 IELTS Academic Test Preparation
- 18 Cambridge B2 First
- 20 Cambridge A1 Advanced
- 22 One to One
- 24 English and Culture (40+)
- 26 Online Tuition





Brighton

A truly exciting city

Brighton is one of the most cosmopolitan cities in the UK and located just 50 minutes from central London by train. It has much of what London has to offer; a notable difference being that Brighton is a seaside resort city.

Brighton is the UK's most popular seaside destination and a truly exciting city with its own identity. Brighton is a unique, upmarket and welcoming place mixing historic buildings, diverse nightlife, trendy boutiques, a rich theatrical and music scene, fabulous clubs and bars, family entertainment, eclectic shopping, 2 universities and a beach front which is one of the most visited in the UK. Not only that, but with the beautiful South Downs National Park close by, offering rolling hills and stunning cliff top coastlines, Brighton is a city with plenty to offer.

Brighton is famous for the Royal Pavilion; the home of King George IV (The Prince Regent) which he often visited as a holiday destination leading a luxurious lifestyle. Since the eighteenth century, Brighton has had the reputation for being a relaxed and vibrant city. Londoners have been travelling to Brighton and the beach ever since the railway arrived in 1841 to bathe in the sea and they still do today to get away from the pressures of city life. Brighton Palace Pier and the Royal Pavilion are the main sights, but you will also find hundreds of pubs and clubs attracting an energetic crowd. The city is now also home to the British Airways i360, the world's thinnest moving observation tower (162m) with views along the coast, across the South Downs and across the English Channel.

Brighton comes alive when the sun is shining; people fill the streets and head down to the

beach at every opportunity. Brighton is one of the lead cities in the UK to host a Pride festival, a celebration to promote equality and diversity (LGBTQ+). The major event is an annual summer festival held in the first week of August which consists of a parade through the city centre, an event in Preston Park and the Kemp Town Village Party with major artists performing (2019 headline artist being Kylie Minogue).

For a quieter place in the sun just head west and pass the seafront bars and the old West Pier (Brighton's ghostly pier that caught on fire in 2003). However, Brighton is an all-season city and even though it can be crowded on a hot summer's day from September the crowds are less but the city still retains its charm.

If the city-life is too much for you, you can always have a break in the fabulous South Downs National Park. Just take a bus or train and in 20 minutes you are walking among green hills, strolling along cobbled streets and enjoying some of the most beautiful coastline views England has to offer.

Brighton & Hove Albion FC were promoted to The Premier League in 2017. Also known as "The Seagulls" their Premier League status means that in the 2020/21 season Brighton are playing against some of the biggest football teams in England at The Amex Stadium in Brighton. You can see great teams play football here in Brighton like Manchester United, Manchester City, Chelsea, Liverpool and Arsenal.

Whatever it is you are looking for to complement your studies and free time, Brighton has a lot to offer.

2021 events in Brighton

March	Sussex Beer & Cider Festival, Vegetarian Festival
April	Brighton Marathon Brighton Food and Drink Festival
May	Brighton Arts Festival, Heroes Run
June	World Naked Bike Ride, London to Brighton Bike Ride
July	Paddle Round the Pier, March of the Mermaids
August	Brighton Food and Drink Festival, Pride Festival
September	Chilli Festival, Colour Run
October	Brighton Comedy Festival
November	Lewes Bonfire Night, Royal Pavilion Ice Rink
December	Burning of the Clocks



Brighton & Hove Albion FC



Burning of the Clocks



Brighton Arts Festival



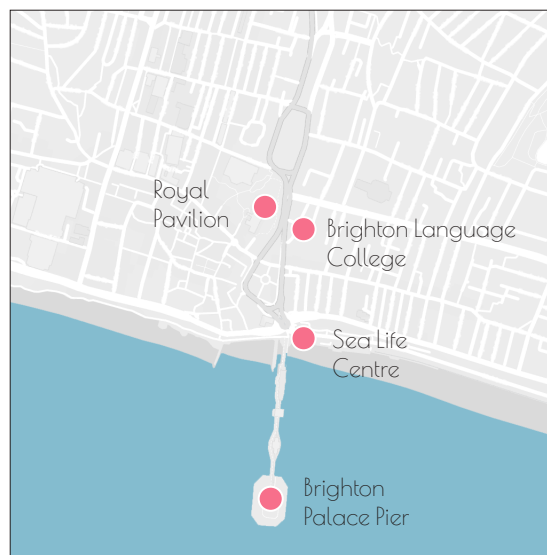
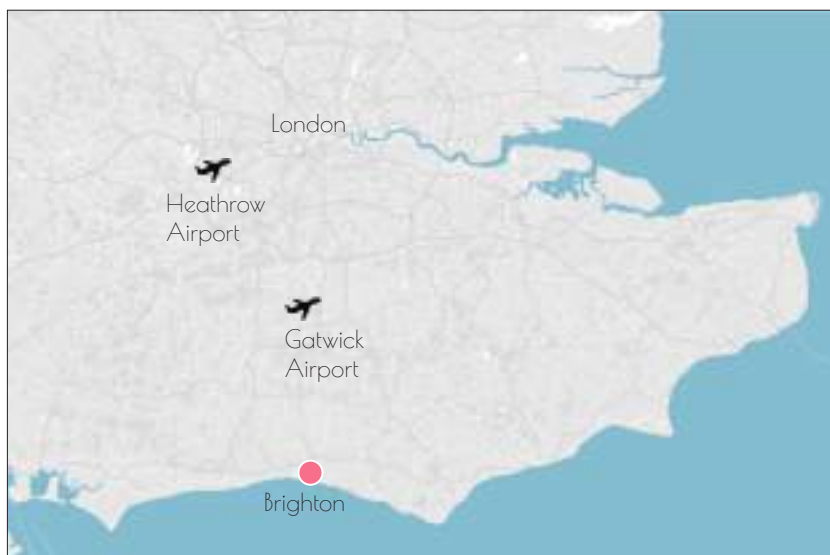
Lewes Bonfire Night



Pride Festival

Key Information

Location, facts and figures



Classes

Maximum Class Sizes:

General English	15
IELTS Academic Test Preparation	15
Business	12
Cambridge B2 First	10
Cambridge C1 Advanced	10
One to One	1
English & Culture (40+)	8
Online Tuition	5

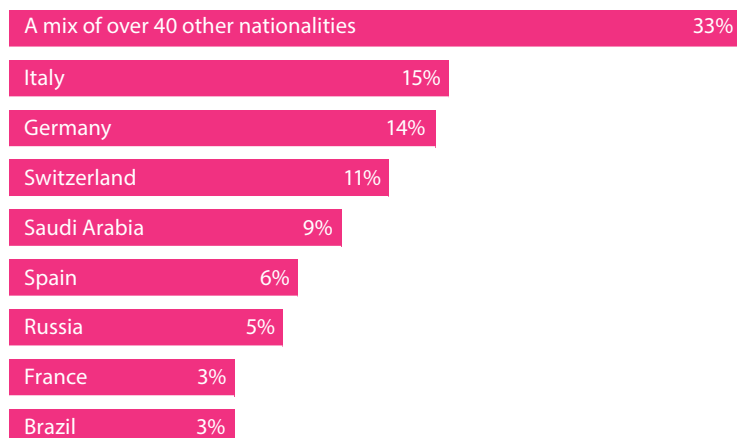
Minimum Ages:

General English	16
IELTS Academic Test Preparation	16
Business	18
Cambridge B2 First	16
Cambridge C1 Advanced	16
One to One	12
English & Culture (40+)	40
Online Tuition	18

Lesson Length:

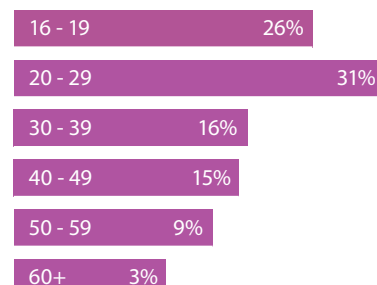
1 lesson	45 minutes
12 lessons	9 hours
20 lessons	15 hours
26 lessons	19.5 hours
32 lessons	24 hours
55 lessons	41.25 hours

Nationality Mix



*Data provided is for 2019

Age Mix



Gender Mix





Student Services

Helping you day by day

Homestay Accommodation

Live in an English-speaking household and learn as you live together, a unique opportunity to improve fluency and experience our culture first hand. A variety of room options are available for you to choose between and you can also eat together with your hosts every morning and evening. BLC homestays are 20–45 minutes away from our city centre school by public transport.

Each homestay provides a different experience of British life where you are welcomed as part of the family. All our homestays are carefully checked by our Accommodation Officers who are available at all times if you need any help while you are with BLC.

Special dietary needs can be catered for (vegan, celiac, lactose free etc.) for a supplement.

BLC Homestay

Single/twin rooms
Carefully selected welcoming hosts
Half board or breakfast only
Excellent value for money
Practise your English at home

BLC Premium Homestay

Private bathroom
Exclusive homestay providers
Ideal for professionals

Private Accommodation

BLC can advise on finding private accommodation with a number of recommended agencies, hotels or hostels in the city. Please remember that if you choose to arrange private accommodation you will not have the benefits of everyday communication and language use your homestay provides.

Public Holidays

BLC is closed on all UK Public Holidays. In such cases new students will start on the Tuesday if the Public Holiday is a Monday.

School Closure Dates

- » 24.12.20 - 01.01.21
- » 02.04.21 – 05.04.21
- » 03.05.21
- » 31.05.21
- » 30.08.21
- » 24.12.21 – 02.01.22

Student Welfare

At BLC we provide a complete welfare package so you have everything you require for a successful and memorable period of study. Our Welfare Officer ensures that you have a safe and enjoyable experience in Brighton and will provide you with all the information you need to maximise your stay here with us. On day 1 you will receive:

A warm welcome, induction and orientation
Coffee morning / meet the students
Your initial free text book
An introduction to our team
Information on Brighton, the college, areas of interest and our facilities
Free Super Fast Wi-Fi (70 Mbps) access
Out of hours hot line phone number
An exciting and active social programme so you can make new friends
Student ID card

Airport Transfer Service

BLC can arrange private taxi transfers to take you directly to your accommodation on arrival and back to the airport on your departure.

Social Programme

BLC looks after your language training and it is also our mission for you to have a great time outside of class relaxing, using the language you have learned and communicating with other students and local people in your free time. We organise many events and work with many local events organisers for special prices and are always here to help you book trips around the UK or provide you with advice.

Example Social Activities (seasonal)

Cinema Evenings
Paris Weekend
West End Musicals
Concerts
Premier League Football
Beach Volleyball
Pottery Classes
International Student Nights
Street Dance
Pub Quiz
Basketball
London Excursions
Lazer Zone
Beach Barbecues
Bouldering
Cream Teas



Student Residence

Residential options for the city centre with Student Castle



Background

Newly opened in September 2020, Student Castle Brighton offers excellent high-end student accommodation situated in the student area of Coombe Road.

Choose from one of the studio rooms, all of which are en-suite and come complete with your own private kitchen or opt for one of the spacious twin rooms, perfect for sharing with a friend or relative.

The residence is 10 minutes from our school and has 206 rooms for students and is a shared facility with students from other colleges, universities and schools.

Includes

Utility bills (gas / electricity / water)
Insurance
Ultra-fast WiFi (100 Mbps)
Common area
Study area
Free bike hire
Onsite laundry room
Reception desk
Exclusive social events
Landscaped courtyard
2 Roof terraces
24 hour security

Room Options

Altman Studio - 19.1m ²
Lukes Studio - 21m ²
Merrifield Studio - 24.3m ²
Nash Studio - 28.9m ²
Motimer Studio - 31.4m ²
Mortimer Delux Studio - 43.6m ²
Wade Twin - 32.7m ²
Wade Delux Twin - 42m ²



Reception Area



Common Study Area



Luckes Studio



Nash Studio

Facilities

Your school and environment

Background

BLC was established in 1995 and relocated to new premises in 2015 with modern facilities and classrooms covering 6 colour coded floors and over 1000m². The school is situated in the city centre opposite the Royal Pavilion and only 2 minutes walk from the beach and Brighton Palace Pier & Sea Life Centre.

You are in the heart of the city each day of your studies, meaning you have all the benefits of Brighton's superb restaurants, beaches, night life, shops, entertainment and unique lifestyle in the UK's trendiest resort city. Brighton Language College operates from 2 buildings, 7 and 12 Old Steine.

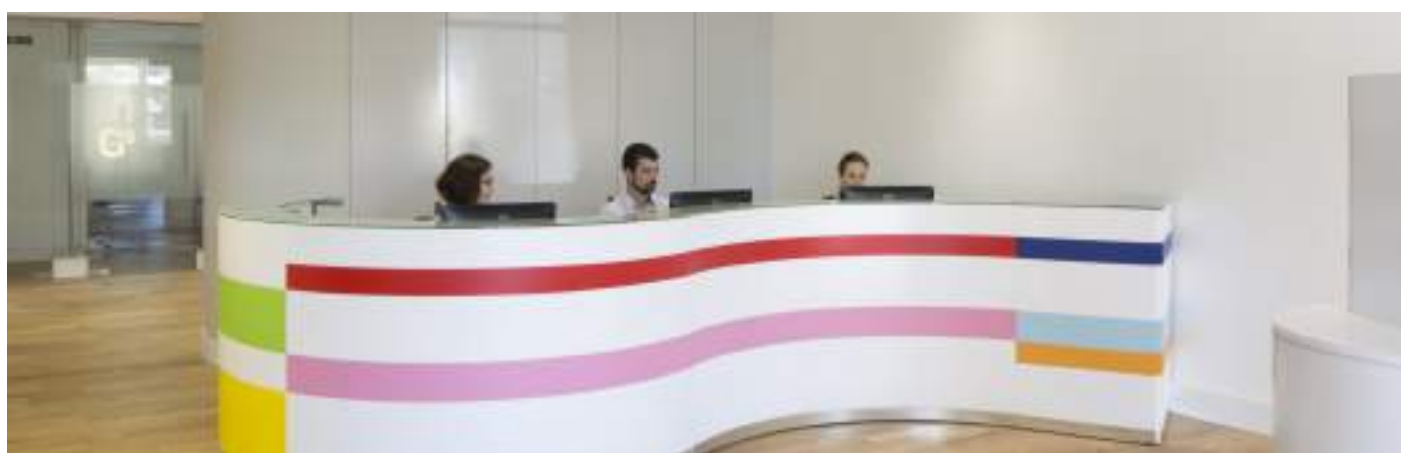
School Floor Guide - 7 Old Steine

6	4th Floor: one to one classrooms / large group classrooms / small group classrooms
5	3rd Floor: large group classrooms / small group classrooms
4	2nd Floor: large group classrooms / small group classrooms
3	1st Floor: Offices / teaching resource centre / large group classrooms
2	Ground Floor: Reception / large group classrooms / small group classrooms / patio
1	Underground: Student lounge / student shop

Features

Free Super Fast Wi-Fi (70 Mbps)
35 Classrooms
Reception / information desk
Student lounge & patio
Welfare & counselling service
Academic support
Airport Transfer service
Accommodation service
City centre school
Royal Pavilion views
Book shop
Tours & excursion reservation desk





Your Progression

Understanding your level of English

Our Courses

Courses taught at Brighton Language College improve your English ability. Our teachers will tailor the course for your level. To help you assess your level, we have a free English level test on our website to help you. BLC teaches 5 levels of English (Elementary - Advanced) and 6 levels - (Beginner - Advanced) during high season (June - August).

English Language Levels

All of our courses follow the Common European Framework Reference for Languages (CEFR).

Every course page lists the level the course is suitable for and many of our courses are available for all levels (you will be placed in a class with people of a similar level to you).

Pre-Arrival Test

All students on an adult course must take a pre arrival test before arrival. Tests must be taken and completed one week prior to arrival.

If a pre-arrival test has not been completed prior to arrival, then your first day will consist of a test and your first day of class may commence on the next day.

Level	Level	Cambridge	IELTS	You can...	You can...	You can...
C2	Proficiency	C2 Proficiency	8.5-9.0	Understand with ease virtually everything heard or read	Summarise information from different sources, reconstructing arguments and accounts in a coherent presentation	Express yourself spontaneously, fluently and precisely even in the most complex situations
C1	Advanced	C1 Advanced	7.0 - 8.0	Understand a wide range of demanding, longer texts, and recognise implicit meaning	Express yourself fluently and spontaneously without much obvious searching for expressions	Use language flexibly and effectively for social, academic and professional purposes
B2	Upper Intermediate	B2 First	5.5 - 6.5	Understand the main ideas of complex text on both concrete and abstract topics.	Interact with a degree of fluency and that makes interaction with native speakers possible without strain for either party	Produce clear, detailed text on a wide range of subjects and be able to explain viewpoints on topical issues.
B1	Intermediate Pre-Intermediate	B1 Preliminary	4.0 - 5.0	Understand the main points of clear standard input on familiar matters regularly encountered in work, school, leisure, etc	Produce simple connected text on topics which are familiar or of personal interest	Describe experiences, events, hopes and ambitions. Briefly give reasons and explanations for opinions and plans
A2	Elementary	A2 Key	3.0 - 3.5	Communicate routine tasks requiring on familiar and routine matters	Understand basic sentences and expressions on personal and family information, shopping, local geography, employment	Describe in simple terms aspects of your background, environment & matters in areas of immediate need
A1	Beginner	-	2.0 - 2.5	Understand and use familiar expressions and very basic phrases	Interact in a simple way if the other person talks slowly and clearly and is prepared to help	Introduce yourself, ask and answer questions about where you live, people you know

QR Code and Test Link



Scan the QR code with your phone or click the link to the on-line test [here](#)



Regency architecture



General English

General English courses run throughout the year. The course is designed to increase your English level through a syllabus which concentrates on listening, reading, speaking and writing. With the text book

grammar and vocabulary is learned to consolidate your studies. Afternoon options cover further skills focussed training, business english lessons or private tuition. Beginners are welcome June - August.

Start Dates	Course Levels	Maximum Class Size	Minimum Course Length	Minimum Age
Every Monday	Beginner (A1) – Advanced (C1)	15 (10 average)	1 week	16 (23 average)

General English 20

Lessons per week:	20	AM Schedule:	09:15 - 12:30
Hours per week:	15	AM Content:	General English
Course Book:	Included	PM Schedule:	N/A
Course Code:	E20	PM Content:	N/A

General English 20 + Skills Focus 6

Lessons per week:	26	AM Schedule:	09:15 - 12:30
Hours per week:	19.5 (15 + 4.5)	AM Content:	General English
Course Book:	Included	PM Schedule:	13:30 - 16:00 (2 days / week)
Course Code:	E26	PM Content:	Skills Focus

General English 20 + Skills Focus 12

Lessons per week:	32	AM Schedule:	09:15 - 12:30
Hours per week:	24 (15 + 9)	AM Content:	General English
Course Book:	Included	PM Schedule:	13:30 - 16:00 (4 days / week)
Course Code:	E32	PM Content:	Skills Focus



Students in class



Interactive lessons

Schedule	Lessons	Hours	09:15 - 10:00	10:00 - 10:45	11:00 - 11:45	11:45 - 12:30	12:30 - 13:30	13:30 - 14:15	14:15 - 14:45	15:00 - 16:00
E20	20	15	General English	General English	General English	General English	-	-	-	-
E26	26	19.5	General English	General English	General English	General English	-	Skills Focus*	Skills Focus*	Skills Focus*
E32	32	24	General English	General English	General English	General English	-	Skills Focus	Skills Focus	Skills Focus

Courses run Monday to Friday (Afternoons Monday to Thursday) / 1 lesson = 45 minutes

* 2 days / week



Class discussions

Skills Focus 12

Lessons per week:	12	AM Schedule:	N/A
Hours per week:	9	AM Content:	N/A
Course Book:	Included	PM Schedule:	13:30 - 16:00 (4 days / week)
Course Code:	EA12	PM Content:	Skills Focus

General English 20 + Business 12

Lessons per week:	32	AM Schedule:	09:15 - 12:30
Hours per week:	24 (15 + 9)	AM Content:	General English
Course Book:	Included	PM Schedule:	13:30 - 16:00 (4 days / week)
Course Code:	EB32	PM Content:	Business

General English 20 + One to One 12

Lessons per week:	32	AM Schedule:	09:15 - 12:30
Hours per week:	24 (15 + 9)	AM Content:	General English
Course Book:	Included	PM Schedule:	13:30 - 16:00 (4 days / week)
Course Code:	EC32	PM Content:	One to One

Schedule	Lessons	Hours	09:15 - 10:00	10:00 - 10:45	11:00 - 11:45	11:45 - 12:30	12:30 - 13:30	13:30 - 14:15	14:15 - 14:45	15:00 - 16:00
EA12	12	9					–	Skills Focus	Skills Focus	Skills Focus
EB32	32	24	General English	General English	General English	General English	–	Business	Business	Business
EC32	32	24	General English	General English	General English	General English	–	One to One	One to One	One to One

IELTS Academic Test Preparation

IELTS is a popular and well recognised examination taken by students who plan to enrol onto higher education programmes. Many professional organisations worldwide

and an increasing number of universities accept IELTS as proof of language ability. Morning tuition can be supplemented with further IELTS tuition or other options.

Start Dates	Minimum Course Level	Maximum Class Size	Minimum Course Length	Minimum Age
Every Monday	Intermediate (B1)	15 (10 average)	2 weeks	16 (23 average)

IELTS Preparation 20

Lessons per week:	20	AM Schedule:	09:15 - 12:30
Hours per week:	15	AM Content:	IELTS Preparation
Course Book:	Included	PM Schedule:	N/A
Course Code:	I20	PM Content:	N/A

IELTS Preparation 20 + IELTS Focus 6

Lessons per week:	26	AM Schedule:	09:15 - 12:30
Hours per week:	19.5 (15 + 4.5)	AM Content:	IELTS Preparation
Course Book:	Included	PM Schedule:	13:30 - 16:00 (2 days / week)
Course Code:	I26	PM Content:	IELTS Focus

IELTS Preparation 20 + IELTS Focus 12

Lessons per week:	32	AM Schedule:	09:15 - 12:30
Hours per week:	24 (15 + 9)	AM Content:	IELTS Preparation
Course Book:	Included	PM Schedule:	13:30 - 16:00 (4 days / week)
Course Code:	I32	PM Content:	IELTS Focus



Motivating classes



Schedule	Lessons	Hours	09:15 - 10:00	10:00 - 10:45	11:00 - 11:45	11:45 - 12:30	12:30 - 13:30	13:30 - 14:15	14:15 - 14:45	15:00 - 16:00
I20	20	15	IELTS Preparation	IELTS Preparation	IELTS Preparation	IELTS Preparation	-	-	-	-
I26	26	19.5	IELTS Preparation	IELTS Preparation	IELTS Preparation	IELTS Preparation	-	IELTS Focus*	IELTS Focus*	IELTS Focus*
I32	32	24	IELTS Preparation	IELTS Preparation	IELTS Preparation	IELTS Preparation	-	IELTS Focus	IELTS Focus	IELTS Focus

Courses run Monday to Friday (Afternoons Monday to Thursday) / 1 lesson = 45 minutes

* 2 days / week



IELTS Preparation 20 + Business 12

Lessons per week:	32	AM Schedule:	09:15 - 12:30
Hours per week:	24 (15 + 9)	AM Content:	IELTS Preparation
Course Book:	Included	PM Schedule:	13:30 - 16:00 (4 days / week)
Course Code:	IB32	PM Content:	Business

IELTS Preparation 20 + Skills Focus 12

Lessons per week:	32	AM Schedule:	09:15 - 12:30
Hours per week:	24 (15 + 9)	AM Content:	IELTS Preparation
Course Book:	Included	PM Schedule:	13:30 - 16:00 (4 days / week)
Course Code:	IE32	PM Content:	Skills Focus

IELTS Preparation 20 + One to One 12

Lessons per week:	32	AM Schedule:	09:15 - 12:30
Hours per week:	24 (15 + 9)	AM Content:	IELTS Preparation
Course Book:	Included	PM Schedule:	13:30 - 16:00 (4 days / week)
Course Code:	IC32	PM Content:	One to One

Schedule	Lessons	Hours	09:15 - 10:00	10:00 - 10:45	11:00 - 11:45	11:45 - 12:30	12:30 - 13:30	13:30 - 14:15	14:15 - 14:45	15:00 - 16:00
IB32	32	24	IELTS Preparation	IELTS Preparation	IELTS Preparation	IELTS Preparation	–	Business	Business	Business
IE32	32	24	IELTS Preparation	IELTS Preparation	IELTS Preparation	IELTS Preparation	–	Skills Focus	Skills Focus	Skills Focus
IC32	32	24	IELTS Preparation	IELTS Preparation	IELTS Preparation	IELTS Preparation	–	One to One	One to One	One to One

Exam fees not included in the course fee

Cambridge

B2 First

The B2 First qualification proves you have the language skills to live and work independently in an English-speaking country or study on courses taught in English. This qualification enables you to communicate effectively

face-to-face, expressing opinions and presenting arguments. Core exam tuition can be supplemented with a variety of afternoon classes to focus on your learning aims.

Start Dates	Minimum Course Level	Maximum Class Size	Minimum Course Length	Minimum Age
Every Monday	Intermediate (B1+)	10 (5 average)	2 weeks	16 (23 average)

B2 First 20

Lessons per week:	20	AM Schedule:	09:15 - 12:30
Hours per week:	15	AM Content:	B2 First
Course Book:	Included	PM Schedule:	N/A
Course Code:	F20	PM Content:	N/A

B2 First 20 + Skills Focus 6

Lessons per week:	26	AM Schedule:	09:15 - 12:30
Hours per week:	19.5 (15 + 4.5)	AM Content:	B2 First
Course Book:	Included	PM Schedule:	13:30 - 16:00 (2 days / week)
Course Code:	FE26	PM Content:	Skills Focus

B2 First 20 + Skills Focus 12

Lessons per week:	32	AM Schedule:	09:15 - 12:30
Hours per week:	24 (15 + 9)	AM Content:	B2 First
Course Book:	Included	PM Schedule:	13:30 - 16:00 (4 days / week)
Course Code:	FE32	PM Content:	Skills Focus



Effective learning



Enjoying free time on the beach

Schedule	Lessons	Hours	09:15 - 10:00	10:00 - 10:45	11:00 - 11:45	11:45 - 12:30	12:30 - 13:30	13:30 - 14:15	14:15 - 14:45	15:00 - 16:00
F20	20	15	B2 First	B2 First	B2 First	B2 First	-	-	-	-
FE26	26	19.5	B2 First	B2 First	B2 First	B2 First	-	Skills Focus*	Skills Focus*	Skills Focus*
FE32	32	24	B2 First	B2 First	B2 First	B2 First	-	Skills Focus	Skills Focus	Skills Focus

Courses run Monday to Friday (Afternoons Monday to Thursday) / 1 lesson = 45 minutes

* 2 days / week



Studying in class

B2 First 20 + Business 12

Lessons per week:	32
Hours per week:	24 (15 + 9)
Course Book:	Included
Course Code:	CB32

AM Schedule:	09:15 - 12:30
AM Content:	F2 First
PM Schedule:	13:30 - 16:00 (4 days / week)
PM Content:	Business

B2 First 20 + One to One 12

Lessons per week:	32
Hours per week:	24 (15 + 9)
Course Book:	Included
Course Code:	FC32

AM Schedule:	09:15 - 12:30
AM Content:	F2 First
PM Schedule:	13:30 - 16:00 (4 days / week)
PM Content:	One to One

Schedule	Lessons	Hours	09:15 - 10:00	10:00 - 10:45	11:00 - 11:45	11:45 - 12:30	12:30 - 13:30	13:30 - 14:15	14:15 - 14:45	15:00 - 16:00
FB32	32	24	B2 First	B2 First	B2 First	B2 First	–	Business	Business	Business
FC32	32	24	B2 First	B2 First	B2 First	B2 First	–	One to One	One to One	One to One

Exam fees not included in the course fee

Cambridge C1 Advanced

Our University of Cambridge C1 Advanced examination course prepares you with the necessary skills to pass the internationally recognised qualification. The course looks at past examination

papers and focus on exam techniques and covers writing, reading, listening and speaking together with grammar. Core exam tuition can be supplemented with a variety of afternoon classes.

Start Dates	Minimum Course Level	Maximum Class Size	Minimum Course Length	Minimum Age
Every Monday	Upper Intermediate (B2+)	10 (5 average)	2 weeks	16 (23 average)

C1 Advanced 20

Lessons per week:	20	AM Schedule:	09:15 - 12:30
Hours per week:	15	AM Content:	C1 Advanced
Course Book:	Included	PM Schedule:	N/A
Course Code:	C20	PM Content:	N/A

C1 Advanced 20 + Skills Focus 6

Lessons per week:	26	AM Schedule:	09:15 - 12:30
Hours per week:	19.5 (15 + 4.5)	AM Content:	C1 Advanced
Course Book:	Included	PM Schedule:	13:30 - 16:00 (2 days / week)
Course Code:	CE26	PM Content:	Skills Focus

C1 Advanced 20 + Skills Focus 12

Lessons per week:	32	AM Schedule:	09:15 - 12:30
Hours per week:	24 (15 + 9)	AM Content:	C1 Advanced
Course Book:	Included	PM Schedule:	13:30 - 16:00 (4 days / week)
Course Code:	CE26	PM Content:	Skills Focus



Brighton Beach



Classroom exam preparation

Schedule	Lessons	Hours	09:15 - 10:00	10:00 - 10:45	11:00 - 11:45	11:45 - 12:30	12:30 - 13:30	13:30 - 14:15	14:15 - 14:45	15:00 - 16:00
C20	20	15	C1 Advanced	C1 Advanced	C1 Advanced	C1 Advanced	-	-	-	-
CE26	26	19.5	C1 Advanced	C1 Advanced	C1 Advanced	C1 Advanced	-	Skills Focus*	Skills Focus*	Skills Focus*
CE32	32	24	C1 Advanced	C1 Advanced	C1 Advanced	C1 Advanced	-	Skills Focus	Skills Focus	Skills Focus

Courses run Monday to Friday (Afternoons Monday to Thursday) / 1 lesson = 45 minutes

* 2 days / week



Brighton Palace Pier

C1 Advanced 20 + Business 12

Lessons per week:	32	AM Schedule:	09:15 - 12:30
Hours per week:	24 (15 + 9)	AM Content:	C1 Advanced
Course Book:	Included	PM Schedule:	13:30 - 16:00 (4 days / week)
Course Code:	CB32	PM Content:	Business

C1 Advanced 20 + One to One 12

Lessons per week:	32	AM Schedule:	09:15 - 12:30
Hours per week:	24 (15 + 9)	AM Content:	C1 Advanced
Course Book:	Included	PM Schedule:	13:30 - 16:00 (4 days / week)
Course Code:	CC32	PM Content:	One to One

Schedule	Lessons	Hours	09:15 - 10:00	10:00 - 10:45	11:00 - 11:45	11:45 - 12:30	12:30 - 13:30	13:30 - 14:15	14:15 - 14:45	15:00 - 16:00
CB32	32	24	C1 Advanced	C1 Advanced	C1 Advanced	C1 Advanced	–	Business	Business	Business
CC32	32	24	C1 Advanced	C1 Advanced	C1 Advanced	C1 Advanced	–	One to One	One to One	One to One

Exam fees not included in the course fee

One to One

One to One tuition is designed to address your specific language learning needs. You complete a needs analysis form sent to you prior to arrival to confirm what you learning goals for your English language training.

The academic team design a tailor made course based upon your specific requirements covering a wide variety of subjects to fulfill your learning aims.

Start Dates	Course Levels	Class Size	Minimum Course Length	Minimum Age
Every Monday	Beginner (A1) – Proficiency (C2)	1	1 week	18 / 12

One to One 20

Lessons per week:	20	AM Schedule:	09:15 - 12:30
Hours per week:	15	AM Content:	One to One
Course Book:	Included	PM Schedule:	N/A
Course Code:	O20	PM Content:	N/A

One to One 20PM

Lessons per week:	20	AM Schedule:	N/A
Hours per week:	15	AM Content:	N/A
Course Book:	Included	PM Schedule:	13:30 - 16:00
Course Code:	OA20	PM Content:	One to One

One to One 32

Lessons per week:	32	AM Schedule:	09:15 - 12:30
Hours per week:	24	AM Content:	One to One
Course Book:	Included	PM Schedule:	13:30 - 16:00 (4 days / week)
Course Code:	O32	PM Content:	One to One

Immersion 55

Lessons per week:	55	AM Schedule:	09:15 - 12:30
Hours per week:	41.25	AM Content:	One to One
1st Course Book:	Included	PM Schedule:	13:30 - 18:30
Course Code:	O55	PM Content:	One to One

One to One Junior 20

Lessons per week:	20	AM Schedule:	09:15 - 12:30
Hours per week:	15	AM Content:	One to One
Course Book:	Included	PM Schedule:	N/A
Course Code:	OJ20	PM Content:	N/A

Schedule	Lessons	Hours	09:15 - 10:00	10:00 - 10:45	11:00 - 11:45	11:45 - 12:30	12:30 - 13:30	13:30 - 14:15	14:15 - 15:00	15:15 - 16:00	16:00 - 16:45
O20	20	15	One to One	One to One	One to One	One to One	-	-	-	-	-
OA20	20	15	-	-	-	-	-	One to One	One to One	One to One	One to One
O32	32	24	One to One	One to One	One to One	One to One	-	One to One	One to One	One to One	-
O55	55	41.25	One to One*	One to One	One to One	One to One	-	One to One	One to One	One to One	One to One*
OJ20	20	15	One to One	One to One	One to One	One to One	-	-	-	-	-

Courses run Monday to Friday / 1 lesson = 45 minutes

*Start 08:30 / Finish 18:30





Seven Sisters



i360



English cream tea



Royal Pavilion banquet room

English and Culture (40+)

This course combines 20 cultural lessons with like-minded students that want to develop their English and explore British culture. Lessons & activities are with other 40+ course students wanting to explore South East England.

Activities vary depending on the season you choose. These are comprised of 4 after class cultural activities / excursions each week including a welcome meal and a Saturday excursion on the middle weekend.

Start Dates	Course Levels	Class Size	Course Length	Minimum Age
See below	Elementary (A2) – Upper Intermediate (B2)	8 (5 average)	1 - 2 weeks	40

English & Culture (40+)

Lessons per week:	20	Course Dates:	03.05 -14.05 / 07.06 -18.06
Hours per week:	15		09.08 - 20.08 / 27.09 - 08.10
Course Materials:	Included	AM Schedule:	09:15 - 12:30
Bus Pass:	Included	AM Content:	English & Culture
Course Code:	HP	PM Schedule:	13:15 - 16:30
		PM Content:	Cultural activities & excursions

Example Activities & Excursions

- » Arundel Castle & gardens
- » Rottingdean village cream teas
- » Lewes Castle & gardens
- » Thames cruise & London sightseeing
- » Preston Manor House
- » Theatre Royal Brighton
- » Seven Sisters country park
- » Royal Pavilion & Brighton Dome



Small focused groups



London Cruise

Schedule	Monday	Tuesday	Wednesday	Thursday	Friday	Saturday	Sunday
09:15 – 12:30	English & Culture	English & Culture	English & Culture	English & Culture	English & Culture	-	Arrival / Departure Free Day
12:30 – 13:15	Lunch	Lunch	Lunch	Lunch	Lunch	-	
Week 1	Welcome Meal	Arundel Castle	Cream Tea	Seven Sisters	-	London Cruise	
Week 2	Preston Manor	Lewes Castle	Royal Pavilion	i360 Tower	-	-	

Courses run Monday to Friday / 1 lesson = 45 minutes (breaks 10:45 – 11:00 / 12:30 – 13:15)

Online Tuition

If you're hoping to take the IELTS exam and need support along the way, our online IELTS preparation course is right for you. Learn about the exam structure and get the strategies you need to feel confident on exam day. BLC

works with Hubbub to provide online tuition. Study online at home either independently or as part of your course prior to arrival here in the UK to kickstart your IELTS progression.

Start Dates	Minimum Course Level	Class Size	Minimum Course Length	Minimum Age
Every Monday	Intermediate (B1)+	5	1 month	18

IELTS Preparation

Lessons per week:	10	AM Schedule:	09:15 - 11:45 / 09:15 - 11:15
Hours per week:	14.75	AM Content:	IELTS Preparation
Course Materials:	Included	PM Schedule:	Home study
Course Code:	IOT	PM Content:	IELTS Preparation

Our live daily online IELTS preparation classes are designed to keep you motivated and moving forward.

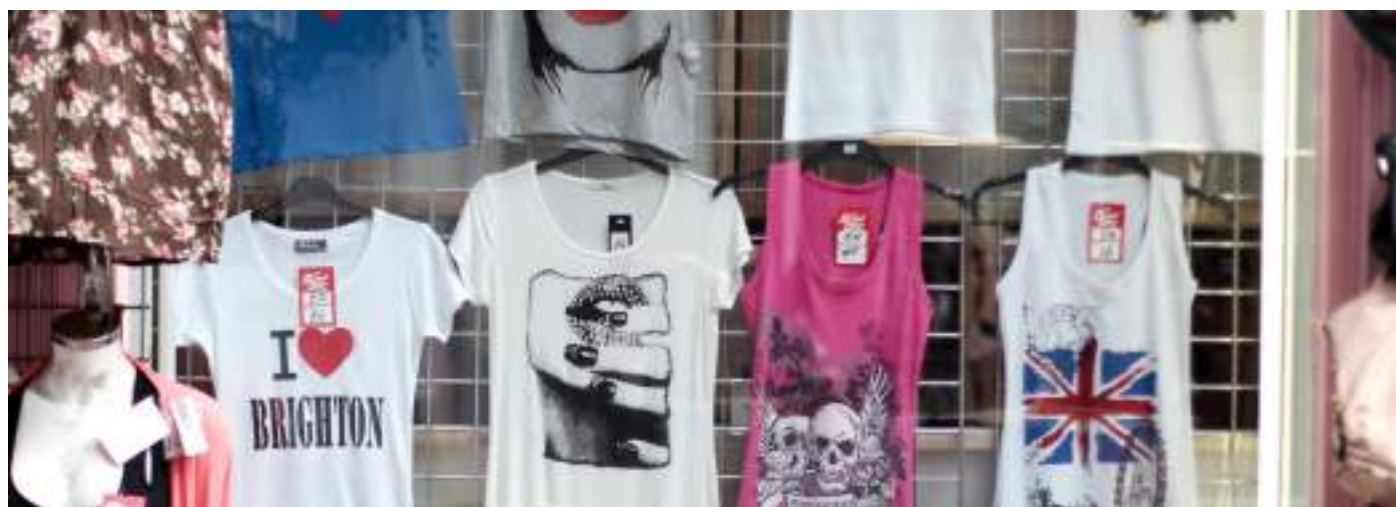
Each week features lessons on Skills Training and Strategy Training in preparation for each of the IELTS Listening, Reading, Writing and Speaking papers.

You will also do weekly Progress Checks and Practice Tests. Plus, our expert teachers provide you with lots of tips, techniques and personal feedback to help you study and learn effectively.

You will need a laptop with webcam and audio capability or smart phone, secure Internet connection to join the course.

- » Skills focus: Build essential knowledge and communication skills to complete each task effectively
- » Skills focus: Improve your vocabulary range and English grammar
- » Strategies focus: Learn how to optimise your scores
- » Strategies focus: Develop confidence to approach each IELTS task successfully
- » Communication focus: Join weekly and monthly conversation classes and events to develop your fluency
- » Feedback focus: Receive individual feedback and support in monthly tutorials
- » Feedback focus: Check your progress with weekly reviews and feedback
- » Feedback progress: Analyse task answers and corrections with weekly practice test

- » 10 live interactive classes per week
- » 5 hours / week of integrated home study
- » Personal tutorial every month
- » 5 students max per class
- » Pre/post-lesson skills development tasks
- » Weekly practice tests
- » Friday focus on speaking
- » Experienced IELTS teachers
- » Access to learning resources



Schedule	Monday	Tuesday	Wednesday	Thursday	Friday	Saturday	Sunday
09:15 – 11:15	IELTS Preparation	-	IELTS Preparation	-	IELTS Preparation		
09:15 - 11:45	-	IELTS Preparation	-	IELTS Preparation	-		
Break	-	-	-	-	-		
1 hour	IELTS Preparation*	IELTS Preparation*	IELTS Preparation*	IELTS Preparation*	IELTS Preparation*		

IELTS Preparation* = integrated home study





Brighton Language College

7 Old Steine, Brighton
BN1 1EJ, United Kingdom

T + 44 (0)1273 647370
F + 44 (0)1273 693606

info@brightonlc.co.uk
www.brightonlc.co.uk