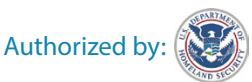


# Study English in LOS ANGELES



Accredited by: **ACGET**



**LANGUAGE SYSTEMS**  
INTERNATIONAL  
COLLEGE OF ENGLISH

Certifications/Associations:



# About Us

## History

Language Systems International College of English was founded in 1987 with the purpose of providing a multitude of language-related services. Its main goal is to give instruction in English as a Second Language (ESL) and test preparation to international students. Language Systems provides high-quality language programs designed to build students' skills and self-confidence when communicating in English in either academic or professional situations. Language Systems provides language instruction that helps international students function successfully in an English-speaking environment, introduces study habits common to those expected at American institutions of higher learning, and assists in the development of critical abilities to think, read, write, listen, and communicate effectively in English.

## Mission Statement

The primary focus of Language Systems International is to teach English as a Second Language (ESL) and test preparation to international students in a communicative, student-centered environment.



**LANGUAGE SYSTEMS**  
INTERNATIONAL  
COLLEGE OF ENGLISH

[www.languagesystems.edu](http://www.languagesystems.edu)

# Why Language Systems?

Accredited by: **ACCET**

## 1. Affordable Tuition

We offer quality programs at an affordable price. We know you might be on a budget, so our affordable tuition can help you meet your goals in English!

## 2. Convenient Class Schedules

Language Systems offers three class schedules, so you can study in the morning, afternoon or evening.

## 3. Enter College without a TOEFL® score

Language Systems has special agreements, or Mutual Recognition Programs (MRP), with several Colleges and Universities in the Los Angeles and Orange County area, so you don't need to take the TOEFL® test to transfer!

## 4. Four Great Locations

Whether you want to be close to the beach or in the city, we have a location for you, near convenient public transportation.

## 5. School Sponsored Activities

We want you to make friends from all over the world, learn more about the American culture, and have fun! That is why we regularly organize sporting tournaments, parties, movies, trips to sites like Disneyland, Universal Studios, San Francisco, and Las Vegas, and much more!

## 6. Student Advisors Speaking Your Language

It is easy to communicate with us because our student advisors can speak to you in your language. Our advisors speak the following languages: Arabic, Chinese, Japanese, Korean, Portuguese, Russian, Spanish, Thai and Turkish.

## 7. Variety of Programs

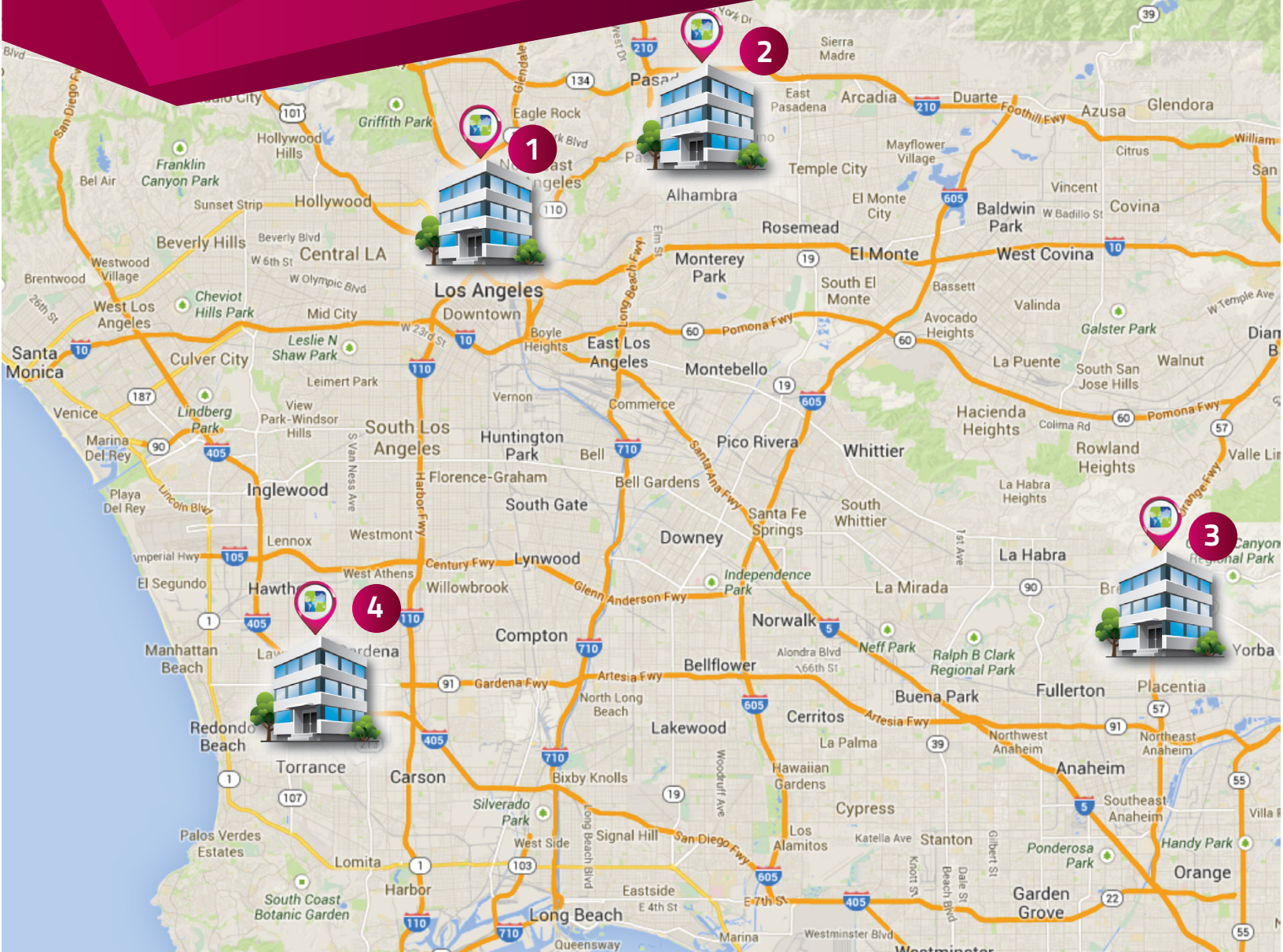
Language Systems has developed language programs to meet your needs; our programs include English as a Second Language Courses, such as ESL Levels 1- 7, Business English, Conversation, Vacation English and Test Preparation Courses, such as TOEFL®, TOEIC®, GMAT® & GRE®.



**LANGUAGE SYSTEMS**  
INTERNATIONAL  
COLLEGE OF ENGLISH

[www.languagesystems.edu](http://www.languagesystems.edu)

# Our Locations



**1 Downtown L.A.**  
3250 Wilshire Boulevard  
Suite 200  
Los Angeles, CA 90010  
Tel: (213) 385-3665  
Fax: (213) 385-7908

**2 Northeast L.A.**  
1635 West Main St.  
1st Floor  
Alhambra, CA 91801  
Tel: (626) 284-9852  
Fax: (626) 239-3552

**3 Orange County**  
750 South Placentia Av.  
Placentia, CA 92870  
Tel: (714) 572-1771  
Fax: (714) 579-0498

**4 South Bay L.A.**  
3528 Torrance Boulevard  
Suite 304  
Torrance, CA 90503  
Tel: (310) 792-7770  
Fax: (310) 755-3117



**LANGUAGE SYSTEMS**  
INTERNATIONAL  
COLLEGE OF ENGLISH

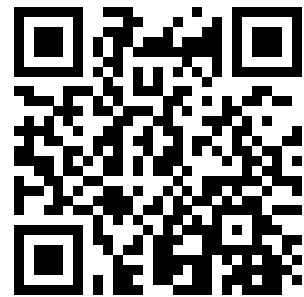
[www.languagesystems.edu](http://www.languagesystems.edu)

# Northeast Los Angeles Campus

The Northeast Los Angeles Center is located in Alhambra, Los Angeles County. Alhambra is surrounded by safe and upper class residential areas, including San Marino and South Pasadena. Top ranked universities and colleges in the United States, including California Institute of Technology (Caltech), California State University, Los Angeles (CSULA) and Pasadena City College are just minutes away from the center. Also, Rose Bowl stadium (homefield of the UCLA Bruins college football team) and The Huntington Library with its beautiful botanical gardens are a short distance from the center. Historic Old Town and Norton Simon Museum are located on beautiful Colorado Boulevard in downtown Pasadena. Many nice shopping, dining and entertainment areas located in downtown Alhambra, Pasadena and Los Angeles, are available around the center.

Watch our campus video

JUST SCAN OUR QR CODE WITH YOUR PHONE!



## Popular Spots

Huntington Library, Old Town Pasadena, Westfield Shopping Center, Rose Bowl, Santa Anita Race Tracks, Norton Simon Museum

## Colleges and Universities

Citrus College, Art Center, Pasadena City College, California State University of L.A.



LANGUAGE SYSTEMS  
INTERNATIONAL  
COLLEGE OF ENGLISH

[www.languagesystems.edu](http://www.languagesystems.edu)

# Downtown Los Angeles Campus

The Downtown Los Angeles Center is located on Wilshire Boulevard, which runs east to west from downtown Los Angeles through Beverly Hills to the ocean in Santa Monica. Universal Studios Hollywood is just a few minutes away by subway from the center. Dodger Stadium (home to the MLB team Los Angeles Dodgers) and Staples Center (home to the NBA teams Los Angeles Lakers and Los Angeles Clippers, and home to the NHL team Los Angeles Kings) are minutes from the center as well. Also, shopping, dining, and entertainment can be enjoyed at several places around the center, including The Grove (entertainment complex), Hollywood and Beverly Hills. Two top ranked universities, University of California, Los Angeles (UCLA) and University of Southern California (USC), are close to the center as well.

Watch our campus video

JUST SCAN OUR QR CODE WITH YOUR PHONE!



## Popular Spots

Dodger Stadium, Griffith Observatory, Hollywood, Universal Studios, Grauman's Chinese Theatre, Hollywood & Highland, Melrose, The Grove



## Colleges and Universities

University of Southern California (USC)  
Los Angeles Trade Technical College (LATTC)  
University of California, Los Angeles (UCLA)



LANGUAGE SYSTEMS  
INTERNATIONAL  
COLLEGE OF ENGLISH

[www.languagesystems.edu](http://www.languagesystems.edu)

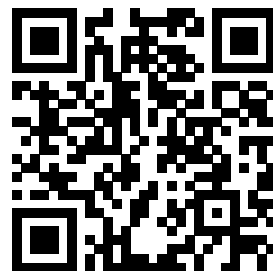
# Orange County Campus

The Orange County Center is located in Placentia, Orange County. Placentia is known for its strong public safety and it is surrounded by educational and tourist areas in the nearby cities of Fullerton and Anaheim. Fullerton is home to several higher educational institutions such as California State University, Fullerton (CSUF) and Fullerton College. Anaheim is the site of the Disneyland Resort, Angel Stadium of Anaheim (home to the MLB team Los Angeles Angels of Anaheim), and Honda Center (home to the NHL team Anaheim Ducks). The center is a short distance from Brea Mall and The Outlets at Orange for shopping, dining and entertainment. Beautiful beaches, including Newport Beach, Laguna Beach and Huntington Beach are located in Orange County.



Watch our campus video

JUST SCAN OUR QR CODE WITH YOUR PHONE!



## Popular Spots

Disneyland, California Adventure, Angel Stadium, Irvine Spectrum, Huntington Beach, Downtown Fullerton, South Coast Plaza, Newport Beach, Knott's Berry Farm

## Colleges and Universities

California State University Fullerton, Hope University, Fullerton College, Cypress College, Golden West College



**LANGUAGE SYSTEMS**  
INTERNATIONAL  
COLLEGE OF ENGLISH

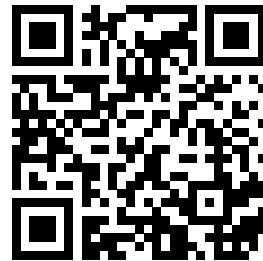
[www.languagesystems.edu](http://www.languagesystems.edu)

# South Bay Los Angeles Campus

The South Bay Los Angeles Center is located in Torrance, Los Angeles County. Torrance consistently ranks among the safest cities in Los Angeles County and has beaches on the Santa Monica Bay. It is also neighboring Redondo Beach, which offers oceanfront dining and entertainment at its pier, Hermosa Beach, and Manhattan Beach, which host the Beach Open Volleyball tournament and the International Surf Festival. The center is a short distance from the StubHub Center (home to the MLS teams Los Angeles Galaxy and Chivas USA). For shopping, dining and entertainment, one of the largest shopping malls in the United States, Del Amo Fashion Center, is just across the street from the center. Also, California State University, Dominguez Hills (CSUDH) and El Camino College are close to the center.

Watch our campus video

JUST SCAN OUR QR CODE WITH YOUR PHONE!



## Popular Spots

Redondo Beach, Hermosa Beach, Del Amo Shopping Mall, South Bay Galleria, Manhattan Beach



## Colleges and Universities

California State University Dominguez Hills, El Camino College, Los Angeles Harbor College



**LANGUAGE SYSTEMS**  
INTERNATIONAL  
COLLEGE OF ENGLISH

[www.languagesystems.edu](http://www.languagesystems.edu)





# Our Programs

## Intensive English Programs

- ESL Levels 1-7 Program (18 hours per week)
- Conversation Program (18 hours per week)
- Business English Program (18 hours per week)
- Vacation English Program (14.4 hours per week)

## Test Preparation Programs

- TOEFL® Preparation Program (18 hours per week)
- TOEIC® Preparation Program (18 hours per week)
- GMAT® & GRE® Preparation Program (18 hours per week)

## Other Programs

- Program Combination Option 1 (36 hours per week)
- Program Combination Option 2 (24 hours per week)
- TESOL Certificate Program (110 hours Total)



**LANGUAGE SYSTEMS**  
INTERNATIONAL  
COLLEGE OF ENGLISH

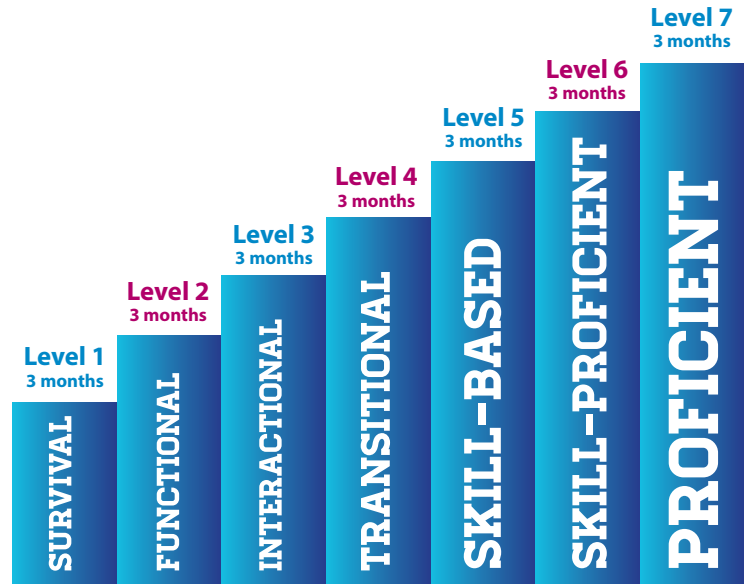
[www.languagesystems.edu](http://www.languagesystems.edu)

TOEFL iBT, TOEIC and GRE are registered trademarks of Educational Testing Service (ETS) in the United States and other countries.

# ESL Levels 1-7 Program

The ESL Levels 1-7 Program combines three classes: Listening & Speaking, Reading & Vocabulary, and Grammar & Writing with three different teachers. Because we have 7 levels in the ESL Program, you will be placed in the most suitable level for you. After you complete level 5 or 6, you can go on to certain colleges without a TOEFL® score.

## 3 Teachers + 7 Levels



### Schedules\*

- ✓ Monday to Friday
- ✓ Morning: 9:00 a.m. – 12:36 p.m.
- ✓ Afternoon: 1:30 p.m. – 5:06 p.m.
- ✓ Evening: 6:00 p.m. – 9:36 p.m.

\*Schedule might vary.



**TOEFL iBT®**

ETS AUTHORIZED TEST CENTER



**LANGUAGE SYSTEMS**  
INTERNATIONAL  
COLLEGE OF ENGLISH

[www.languagesystems.edu](http://www.languagesystems.edu)

# Conversation Program

The Conversation Program is designed to improve your pronunciation, idiom usage, and fluency skills. You will be able to practice and use the skills necessary for real-world situations in English. The Conversation programs is broken down into two levels:

## Intermediate Conversation Program

**1st Class: Conversation Management and Accent Reduction (CMAR)**

The focus is on improving everyday, practical communication skills and practicing American English pronunciation in order to speak with confidence, clarity and effectiveness.

**2nd Class: Focus on Idioms (FOI)**

The focus is on using idioms correctly in everyday conversations. The students will practice idioms in a variety of different contexts and use idioms confidently in conversations and discussions.

**3rd Class: Role Play Practice (RPP)**

The focus is on immersing the students in different “real life” situations in which they must communicate effectively. In this class the students will act in a variety of contexts in order to learn how to deal with real situations in the English-speaking world. Students will do dialogues, improvisations, and acting in order to improve communication skills.

## Advanced Conversation Program

**1st Class: Conversation Management and Accent Reduction (CMAR)**

The focus is on improving pronunciation and intonation in debates, presentations, speeches, and advanced discussions. The goal is to speak with confidence, clarity, and native-like pronunciation.

**2nd Class: In-Depth Communication (IDC)**

Students will focus on special projects including different types of presentations and speeches. In addition, they will practice advanced conversation strategies in a variety of formal and informal situations, including negotiating, expressing concerns, and persuading.

**3rd Class: In-Depth Discussion (IDD)**

The focus is on developing and sharpening students’ skills in formal and informal debates and discussions related to real-life issues in the United States. Students will practice forming arguments and counter-arguments as well as expressing one’s point of view on a variety of relevant issues.

## Schedules\*

- ✓ **Monday to Friday**
- ✓ **Afternoon:** 1:30 p.m. – 5:06 p.m.
- ✓ **Evening:** 6:00 p.m. – 9:36 p.m.

\*Schedule might vary



**LANGUAGE SYSTEMS**  
INTERNATIONAL  
COLLEGE OF ENGLISH

[www.languagesystems.edu](http://www.languagesystems.edu)



# Business English Program

The Business English program consists of three classes: Business Communications, Business Theory and Meetings, and Business Practice. This course will prepare you for all aspects of the business world, from presentations to PowerPoint, negotiating to socializing, and phone skills to letter-writing. Get ahead in your chosen field!



## **Business Communications:** (6:00 p.m. - 7:00 p.m.)

- ✔ Telephone skills
- ✔ Writing skills
- ✔ Socializing skills

This class focuses on telephone skills, writing skills (letters, faxes and emails), socializing skills, and cultural considerations in the U.S. business world. Students will actively participate in phone conversations, role-play realistic business scenarios, and become familiar with the customs and etiquettes of the U.S. business landscape. Weekly tests will measure the individual learner's progress in the pronunciation, syntax, and acquisition of phrases commonly used throughout the workplace. Students will be instructed in the correct forms for all types of business communications, including official letters, faxes, voicemails, emails and computer English.

## **Business Theory and Meetings:** (7:15 p.m. - 8:15 p.m.)

- ✔ Meeting skills
- ✔ Negotiating skills
- ✔ Managerial skills
- ✔ Business vocabulary skills
- ✔ Inter-personal skills

This class is designed with instruction focusing on English skills for the world of business and economics. Students will lead and participate in weekly meetings, practice negotiating skills, considerably expand their general knowledge of American business culture, and increase their self-confidence when writing and speaking in different business situations and environments. Topics include: career management, product descriptions, corporate entertaining, public relations, managerial skills, technical terms and abbreviations, business metaphors and fixed expressions in the context of price and money. Students will be tested weekly for business vocabulary skills and on a bi-weekly basis for meeting and inter-personal skills.

## **Business Practice:** (8:30 p.m. - 9:36 p.m.)

- ✔ Presentation skills
- ✔ Interviewing skills
- ✔ Organizational skills

This class allows students of Business English to use graphs, charts, PowerPoint and overhead projector formats to make presentations, present business plans, and describe company structures, in groups and individually. Students will also learn interview protocols and practice interviewing skills in English, as well as learn how to market themselves by creating effective portfolios and resumes, describing themselves and negotiating salary. Students will be required to make presentations where they display effective communication and organizational skills.

## **Schedule\***

**Monday to Friday**  
6:00 p.m. – 9:36 p.m.

\*Schedule might vary



**LANGUAGE SYSTEMS**  
INTERNATIONAL  
COLLEGE OF ENGLISH

[www.languagesystems.edu](http://www.languagesystems.edu)



# Vacation English Program

(14.4 hours per week)

The Vacation English program (VEP) provides students with the opportunity to explore in and around the Los Angeles area while helping improve confidence in using English in everyday situations.

Based on Language Systems's popular intensive ESL program, the Vacation English program focuses on listening, speaking, grammar and reading skills, but it has less rigorous academic requirements, helping students improve while having enough time to explore popular nearby tourist sites. There will be fun activities and field trips available every Friday, giving students the chance to practice established and developing language skills in real-world settings while learning about American culture.

## Educational Objectives:

- Helping foreign students function successfully in an English-speaking environment by improving their ability to communicate effectively in English.
- Introducing students to American culture.
- Building students' self-confidence and self-esteem when communicating in English in personal situations.

## Prerequisites:

- Have at least a rudimentary understanding and ability to read, write and speak basic English.
- In the US for a short period of time (less than 12 weeks).

## Length & Schedule:

This is a 4-week program Monday - Thursday from 9:00 a.m. to 12:36 p.m.



**LANGUAGE SYSTEMS**  
INTERNATIONAL  
COLLEGE OF ENGLISH

[www.languagesystems.edu](http://www.languagesystems.edu)

# TOEFL iBT<sup>®</sup> Preparation Program

## TOEFL iBT<sup>®</sup> Class Purpose and Design

The intensive TOEFL iBT<sup>®</sup> class prepares students for the iBT by presenting and practicing strategies to help them improve their reading, vocabulary, listening, speaking and writing skills. In addition, students are given practice in critical thinking and note-taking skills. This class is beneficial for students who need a TOEFL<sup>®</sup> score to get into a university or graduate school program and students who need a TOEFL<sup>®</sup> score to enter a profession in the U.S. (such as nursing or pharmacy).



## Unique 4-week system

Our TOEFL<sup>®</sup> program has a unique 4-week system that includes listening, speaking, reading, and writing practice on the computer. You will also have a practice TOEFL<sup>®</sup> test every 4 weeks to get an idea of your TOEFL<sup>®</sup> score. Students take a complete practice test on the computer in weeks 3, 7 and 11. The complete test is then reviewed in class, and each student receives a score.

- ✓ Week 1: Strategies & Skill Building
- ✓ Week 2: Strategies & Skill Building
- ✓ Week 3: Strategies, Skill Building and Complete Practice Test
- ✓ Week 4: Strategies, Skill Building and Test Review (students receive their score)

**Listening Section:** Students are introduced to the six question types presented in the iBT listening section and learn note-taking strategies to effectively capture the main ideas and details.

**Reading Section:** Students are introduced to the ten question types presented in the iBT reading section and learn strategies to answer the questions more effectively.

**Speaking Section:** Strategies are presented to improve speaking, organization, and pronunciation. Students speak on a topic that simulates actual TOEFL<sup>®</sup> questions, and are given feedback by the instructor.

**Writing Section:** Strategies are presented to help students write the standard American English essay. Students write on a topic that simulates actual TOEFL<sup>®</sup> questions, and are given feedback by the instructor.

## Schedules\*

### Monday to Friday

**Morning:** 9:00 a.m. – 12:36 p.m.

**Afternoon:** 1:30 p.m. – 5:06 p.m.

**Evening:** 6:00 p.m. – 9:36 p.m.

\*Schedule might vary according to location

**TOEFL iBT<sup>®</sup>**

**ETS AUTHORIZED TEST CENTER**

Language Systems International is an ETS-authorized TOEFL<sup>®</sup> iBT and/ or TOEIC<sup>®</sup> Test Center.

[www.languagesystems.edu](http://www.languagesystems.edu)

TOEFL iBT, TOEIC and GRE are registered trademarks of Educational Testing Service (ETS) in the United States and other countries.



**LANGUAGE SYSTEMS**  
INTERNATIONAL  
COLLEGE OF ENGLISH

# TOEIC® Preparation Program

Monday to Friday\*  
1:30 p.m. to 5:06 p.m.

The TOEIC® preparation program has a unique 10-day system that covers all 7 parts of the TOEIC® listening and reading, with time dedicated each week to focus on more specific, complex skills. You will have a practice TOEIC® test every two weeks to get an idea of your TOEIC® score. You can get a high TOEIC® score to help you find a good job in your country.

## TOEIC® Class Purpose and Design

The purpose of the TOEIC® class is to help students pass the TOEIC® test. In addition, the class helps students be more successful in an actual business environment by building up their business vocabulary and comprehension of the business environment.

### The class is most useful for:

- Students who need a TOEIC® score to get a job in their country
- Students who wish to work in business in an English-speaking country
- Students who wish to learn business-related vocabulary

### Students should be prepared for:

• **Intensive study of the TOEIC® test:** The class uses TOEIC® questions in listening, grammar, vocabulary, and reading. The students participate in simulated test situations and review each test question by question.



• **Speaking and Writing Practice:** The class uses a textbook approved by ETS that focuses on the speaking and writing sections of the test. Students practice for these parts in at least two sessions each week. Pronunciation, intonation, grammar, sentence structure and other skills are emphasized to help the student succeed on these parts of the test.

• **Intensive Vocabulary Building:** The class uses a textbook that contains vocabulary that most commonly appears on the TOEIC® test. Up to an hour a day is spent on learning new words, understanding and practicing them in context, and reviewing word forms. In addition, words are often pulled from the practice tests for review. Through these two approaches, students are introduced to vocabulary from both American and British English.

• **Business Readings:** Authentic business articles from newspapers and magazines are used to give students real life in-context examples of how business vocabulary is used. Students read and discuss the articles in class in order to practice comprehension skills in business-related environments.

In addition to the listening and reading portions of the paper-based test, ETS has two computer-based sections: speaking and writing. Right now, these test sections are optional, based on the institution to which the test-taker wants to submit TOEIC® scores.



**TOEFL iBT®**

ETS AUTHORIZED TEST CENTER

\*Schedule might vary.

Language Systems International is an ETS-authorized TOEFL® iBT and/or TOEIC® Test Center.



**LANGUAGE SYSTEMS**  
INTERNATIONAL  
COLLEGE OF ENGLISH

[www.languagesystems.edu](http://www.languagesystems.edu)

TOEFL iBT, TOEIC and GRE are registered trademarks of Educational Testing Service (ETS) in the United States and other countries.

# GMAT® & GRE® Preparation Program

An intensive test preparation class – 18 hours per week – that combines the similar elements of the revised GRE®/GMAT®, yet also allows for individualized review and practice of the components that are not alike. This class will cover the strategies and review the verbal portions of both tests. The class will cover the following areas:

**Vocabulary** An intensive review of words that appear on the GMAT® and GRE® in addition to a study/review of word roots.

**Reading and Comprehension** Question types for both the GRE® and GMAT® will be explained, analyzed and reviewed.

**Sentence Correction** Analysis and practice of the sentence correction questions will be done in separate GMAT® sessions.

**Critical Reasoning** This is a question type specific to the GMAT® and will be extensively reviewed in the individualized GMAT® sections of the class.

**Writing** The structure of an essay and approaches for analyzing issues and arguments will be reviewed and reinforced during the 12-week session.

**Text Completion and Sentence Equivalence** These are question types specific to the GRE® test.

Strategies for recognizing relationships as well as reinforcement of vocabulary will be presented in the individualized GRE® sections of the class.

**Computer Aided Practice** Both GRE® and GMAT® students will have assigned LAB days to get additional instruction via the computer. This is particularly helpful for the student, since both the GRE® and the GMAT® are computerized in the United States.

**The student should be prepared to do extensive outside preparation in order to maximize the class time.**

## Schedule\*

\*Schedule might vary

**Monday to Friday** 1:30 p.m. to 5:06 p.m.

TOEFL iBT, TOEIC and GRE are registered trademarks of Educational Testing Service (ETS) in the United States and other countries.





# Program Combinations

## Option 1 **36 hours per week**

Option 1 is a combination of Morning and Afternoon Programs. For example, you can study ESL in the morning from 9:00 a.m. - 12:36 p.m. and Test Preparation or Conversation in the afternoon from 1:30 p.m. - 5:06 p.m.

### Schedule:

Monday to Friday.

**18 hours per week:** Morning Program

+

**18 hours per week:** Afternoon Program

9:00 a.m. - 12:36 p.m.\*  
Monday - Friday

Reading  
&  
Vocabulary

Grammar  
&  
Writing

Listening  
&  
Speaking

+

1:30 p.m. - 5:06 p.m.\*  
Monday - Friday

CMAR

Role  
Play

Focus  
on  
idioms

**36 hours per week**

## Option 2 **24 hours per week**

Option 2 combines the ESL Program with the Conversation Management & Accent Reduction (CMAR) class. In the CMAR class, you will work on pronunciation and reduce your accent to develop better English conversational skills.

✓ **4 Teachers**

✓ **7 Levels**

### Schedule:

Monday to Friday

**18 hours per week:** Morning Program

+

**6 hours per week:** CMAR class

(Conversation Management and Accent Reduction)

9:00 a.m. - 12:36 p.m.\*  
Monday - Friday

Reading  
&  
Vocabulary

Grammar  
&  
Writing

Listening  
&  
Speaking

+

1:30 p.m. - 2:42 p.m.\*  
Monday - Friday

CMAR

**24 hours per week**



# TESOL Certificate Program

(110 hours)

In this 110-hour teacher training program\*, participants are introduced to TESOL methodologies and approaches, various techniques for planning and teaching classes in all the English language-skill areas, cross-cultural communication, and a variety of levels and learning styles in the ESL classroom. Through a program of lectures, readings, discussions, assignments, practical teaching exercises, classroom observations, team teaching, and student teaching, participants will acquire a fundamental knowledge of the methodology and materials of TESOL and the basic skills needed in putting that knowledge into practice.

## Requirements:

A bachelor's degree

TOEFL iBT 65 or IELTS 6.0 (for non-native English speakers)

Prior teaching experience is not necessary but an interview may be required for non-native English speakers.

\*Program does not qualify as a full course of study.

For more information please contact us at [tesolcert@languagesystems.edu](mailto:tesolcert@languagesystems.edu).



**LANGUAGE SYSTEMS**  
INTERNATIONAL  
COLLEGE OF ENGLISH

[www.languagesystems.edu](http://www.languagesystems.edu)

# Sample Daily Schedule

All 18 hours per week programs either morning or afternoon

## Morning Classes\*

9:00 a.m. - 10:00 a.m.

**BREAK**

10:15 a.m. - 11:15 a.m.

**BREAK**

11:30 a.m. - 12:36 p.m.

## Afternoon Classes\*

1:30 p.m. - 2:42 p.m.

**BREAK**

2:50 p.m. - 3:50 p.m.

**BREAK**

4:05 p.m. - 5:06 p.m.

## Sample Schedule: Level 5 Morning (Monday to Friday)

Time	Class	Teacher
9:00 a.m. - 10:00 a.m.	Listening/Speaking	Teacher A
	<b>BREAK</b>	
10:15 a.m. - 11:15 a.m.	Grammar/Writing	Teacher B
	<b>BREAK</b>	
11:30 a.m. - 12:36 p.m.	Reading/Vocabulary	Teacher C

## Sample Schedule: Level 5 Afternoon (Monday to Friday)

Time	Class	Teacher
1:30 p.m. - 2:42 p.m.	Listening/Speaking	Teacher D
	<b>BREAK</b>	
2:50 p.m. - 3:50 p.m.	Grammar/Writing	Teacher E
	<b>BREAK</b>	
4:05 p.m. - 5:06 p.m.	Reading/Vocabulary	Teacher F

\*Note: Class schedule may vary



**LANGUAGE SYSTEMS**  
INTERNATIONAL  
COLLEGE OF ENGLISH

[www.languagesystems.edu](http://www.languagesystems.edu)

# Go to College without a TOEFL® score

Language Systems has special agreements, or Mutual Recognition Programs (MRP), with many Los Angeles and Orange County area colleges and universities. Under the conditions of the MRP agreement, these colleges and universities allow Language Systems students to enroll without having to take the TOEFL® test.

## The following schools accept students who have successfully completed level 5:

1. El Camino College
2. Los Angeles Harbor College
3. Los Angeles Trade-Tech College
4. Los Angeles Southwest College

## The following schools accept students who have successfully completed level 6:

- |                                 |  |
|---------------------------------|--|
| 1. Bristol University           | 10. Marymount California University                          |
| 2. Cerritos College             | 11. Orange Coast College                                     |
| 3. Cypress College              | 12. Pasadena City College                                    |
| 4. Devry University             | 13. Pierce College   |
| 5. East Los Angeles College     | 14. Rio Hondo College  |
| 6. Fremont College              | 15. Santa Monica College                                     |
| 7. Glendale Community College   | 16. Santiago Canyon College                                  |
| 8. Golden West College          | 17. Westcliff University                                     |
| 9. National Polytechnic College | 18. West Los Angeles College                                 |
|                                 | 19. University of the West<br>(Academic Bridge Program Only) |

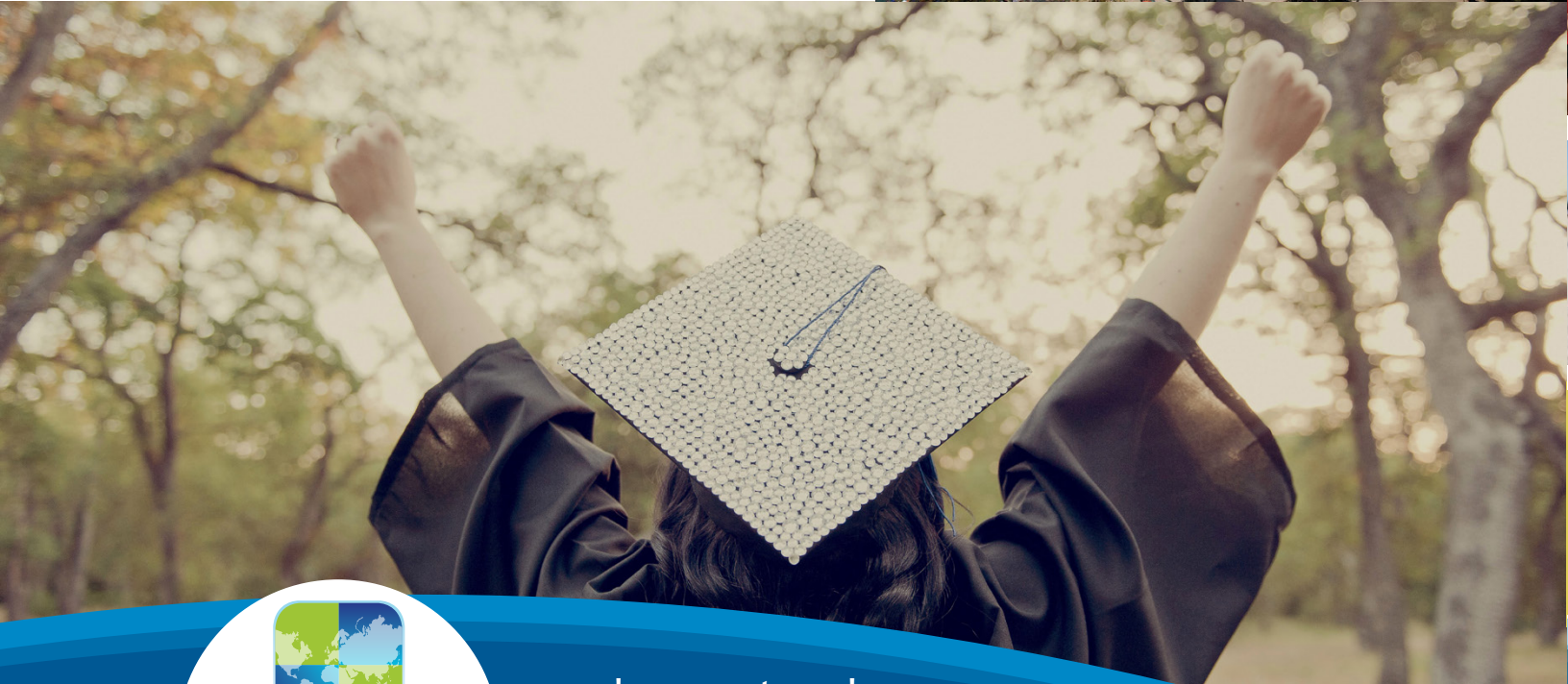


## The following schools accept students who have successfully completed level 7:

1. Fullerton College
2. New York Film Academy
3. Mt. Sierra College
4. University of the West

Students at Language Systems are able to transfer to any college no matter which Language Systems campus they attend.

**Please visit our website for an updated list.**



**LANGUAGE SYSTEMS**  
INTERNATIONAL  
COLLEGE OF ENGLISH

[www.languagesystems.edu](http://www.languagesystems.edu)

TOEFL iBT, TOEIC and GRE are registered trademarks of Educational Testing Service (ETS) in the United States and other countries.

# Annual Events & Activities

Language Systems students enjoy a variety of activities such as making movies with our Film Group Project, going to our annual Beach, Luau, and Halloween parties, and competing in our Soccer, Basketball, and Beach Volleyball tournaments.

Every term, Language Systems plans activities outside of the classroom such as lunch socials, movies, shopping, baseball games, Disneyland, Universal Studios and more!

## Schedule\*

### Winter Term

February: St. Valentine's Day Party  
Ski Trip

March: **Language Systems** Basketball Tournament

### Spring Term

May: **Language Systems** Soccer Tournament  
Las Vegas & Grand Canyon Trip

June: Summer Celebration & Talent Show

### Summer Term

San Francisco Trip

August: Beach Party / Volleyball Tournament  
Las Vegas Trip

### Fall Term

October: Halloween Party  
San Diego Trip

November: Thanksgiving Celebration

December: Christmas Celebration,  
New Years Eve Vegas Party

\*Schedule might vary



LANGUAGE SYSTEMS  
INTERNATIONAL  
COLLEGE OF ENGLISH

[www.languagesystems.edu](http://www.languagesystems.edu)

## 2016 Tuition

	14.4 hours a week program	18 hours a week program	24 hours a week Option 2	36 hours a week Option 1
1 week	\$311	\$343	\$427	\$549
4 weeks	\$745	\$820	\$1,021	\$1,312
8 weeks	\$1,217	\$1,339	\$1,668	\$2,142
12 weeks	\$1,739	\$1,913	\$2,382	\$3,061
24 weeks	N/A	\$3,485	\$4,339	\$5,576
36 weeks	N/A	\$5,043	\$6,278	\$8,069
48 weeks	N/A	\$6,599	\$8,218	\$10,558

14.4 hours / week: Vacation English

18 hours / week: ESL Levels 1-7, Conversation, Business, TOEFL®, TOEIC®, GMAT® & GRE®

24 hours / week: ESL Program + CMAR class

36 hours / week: Morning + Afternoon Programs



**LANGUAGE SYSTEMS**  
INTERNATIONAL  
COLLEGE OF ENGLISH

[www.languagesystems.edu](http://www.languagesystems.edu)

# Academic Calendar 2016

Terms and Sessions in 2016

Winter Term 2016							
	Su	M	Tu	W	Th	F	Sa
January	3	4	5	6	7	8	9
	10	11	12	13	14	15	16
	17	18	19	20	21	22	23
	24	25	26	27	28	29	30
February	31	1	2	3	4	5	6
	7	8	9	10	11	12	13
	14	15	16	17	18	19	20
	21	22	23	24	25	26	27
March	28	29	1	2	3	4	5
	6	7	8	9	10	11	12
	13	14	15	16	17	18	19
	20	21	22	23	24	25	26
	27	28	29	30	31	1	2
							☽
							☽

Spring Term 2016							
	Su	M	Tu	W	Th	F	Sa
April	3	4	5	6	7	8	9
	10	11	12	13	14	15	16
	17	18	19	20	21	22	23
	24	25	26	27	28	29	30
May	1	2	3	4	5	6	7
	8	9	10	11	12	13	14
	15	16	17	18	19	20	21
	22	23	24	25	26	27	28
June	29	30	31	1	2	3	4
	5	6	7	8	9	10	11
	12	13	14	15	16	17	18
	19	20	21	22	23	24	25
	26	27	28	29	30	1	2
							☽
							☽

Summer Term 2016							
	Su	M	Tu	W	Th	F	Sa
July	3	4	5	6	7	8	9
	10	11	12	13	14	15	16
	17	18	19	20	21	22	23
	24	25	26	27	28	29	30
August	31	1	2	3	4	5	6
	7	8	9	10	11	12	13
	14	15	16	17	18	19	20
	21	22	23	24	25	26	27
September	28	29	30	31	1	2	3
	4	5	6	7	8	9	10
	11	12	13	14	15	16	17
	18	19	20	21	22	23	24
	25	26	27	28	29	30	1
							☽
							☽

Fall Term 2016							
	Su	M	Tu	W	Th	F	Sa
October	2	3	4	5	6	7	8
	9	10	11	12	13	14	15
	16	17	18	19	20	21	22
	23	24	25	26	27	28	29
November	30	31	1	2	3	4	5
	6	7	8	9	10	11	12
	13	14	15	16	17	18	19
	20	21	22	23	24	25	26
December	27	28	29	30	1	2	3
	4	5	6	7	8	9	10
	11	12	13	14	15	16	17
	18	19	20	21	22	23	24
	25	26	27	28	29	30	31
							☽
							☽

## Winter Term 2016:

January 4, 2016 - March 25, 2016

### Starting Dates

- January 4, 2016 (Session A)
- February 1, 2016 (Session B)
- February 29, 2016 (Session C)

### Holidays

- January 18 (Martin Luther King Day)
- February 15 (President's Day)

### Spring School Break

March 28, 2016 - April 1, 2016

## Spring Term 2016:

April 4, 2016 - June 24, 2016

### Starting Dates

- April 4, 2016 (Session A)
- May 2, 2016 (Session B)
- May 31, 2016 (Session C)

### Holidays

- May 30 (Memorial Day)

### Summer School Break

June 27, 2016 - July 1, 2016

## Summer Term 2016:

July 5, 2016 - September 23, 2016

### Starting Dates

- July 5, 2016 (Session A)
- August 1, 2016 (Session B)
- August 29, 2016 (Session C)

### Holidays

- July 4 (Independence Day)
- September 5 (Labor Day)

### Fall School Break

September 26, 2016 - September 30, 2016

## Fall Term 2016:

October 3, 2016 - December 23, 2016

### Starting Dates

- October 3, 2016 (Session A)
- October 31, 2016 (Session B)
- November 28, 2016 (Session C)

### Holidays

- November 24 - 25 (Thanksgiving Day)

### Winter School Break

December 26, 2016 - December 30, 2016

# How to apply to Language Systems from outside the U.S.A.

For Overseas Students: You are in your home country (out of the USA) and applying for the F-1 student visa.

**Please send the following to us by mail, fax, or e-mail to receive an I-20. You will need an I-20 to apply for your F-1 student visa.**

- ✓ Application form
- ✓ Copy of passport
- ✓ Bank statement (at least \$13,000 / no more than 3 months old)
- ✓ Proof of Highest Education Attended (high school diploma or something proving the student has finished some form of higher education)
- ✓ \$150 non-refundable processing fee
- ✓ \$200 SEVIS fee
- ✓ \$100 tuition deposit
- ✓ \$100 shipping and handling fee

**There are three ways to make your payment. Please choose the most convenient way for you:**

- ✓ Credit Card: You can use VISA or MasterCard. After you fill out the online application form, you will see an online payment page. You can fill in your credit card information and pay through Pay Pal. You can also download our credit card payment form and send it to us by mail, fax or email.
- ✓ Bank Wire Transfer: You can wire the payment from your bank to our bank account. A \$35 bank charge is added if you wire the payment, so please add \$35 to the total. Please contact us to get our bank account information.

As soon as we receive your application, documents and payment, we will mail you by FEDEX your I-20, the SEVIS fee receipt (I-901), and an acceptance letter to you. It takes about 5-10 days, but it varies from country to country.

## **After you receive your I-20...**

Please check the U.S. Embassy or Consulate website in your country to find out what you need to bring to apply for your F-1 visa. You can find the website at the following web address: <http://usembassy.state.gov/>

## **After you receive your F-1 visa...**

You may enter the United States up to 30 days before the starting date on your I-20. Please show the following in order to enter the United States:

- ✓ Passport with F-1 visa
- ✓ I-20
- ✓ SEVIS fee receipt

## **After you enter the United States...**

Please report to Language Systems International with the items listed below before or on your starting date. You will join the new student orientation on the first Monday of a session.

- ✓ Passport with F-1 visa
- ✓ I-20
- ✓ Your address in the United States
- ✓ Money for tuition balance and textbooks





# How to transfer to Language Systems from another school in the U.S.A.

The transfer process to Language Systems is easy, and we will guide you through it. The fastest method is to come to the Language Systems school you wish to attend. Bring the following with you:

- ✓ Application Form (you can fill it out at the school)
- ✓ Processing fee \$150 (non-refundable)
- ✓ Passport
- ✓ F-1 visa (should be in your passport)
- ✓ I-20 from your current school
- ✓ Bank statement of at least \$3,000
- ✓ Proof of highest education attended
- ✓ Tuition fee for a 12-week program

We will ask you to complete a paper application form and provide you with a transfer form.

You will need to ask your current school to fill out the transfer form before you finish your current program. Your current school will then "release" you, and we will accept you. Usually this process only takes a few days.



**LANGUAGE SYSTEMS**  
INTERNATIONAL  
COLLEGE OF ENGLISH

[www.languagesystems.edu](http://www.languagesystems.edu)

# How to apply to Language Systems for change of status students.

For Change of Status Students: You are in the USA and changing your status to a F-1 student status to study.

Please bring the following to our school:

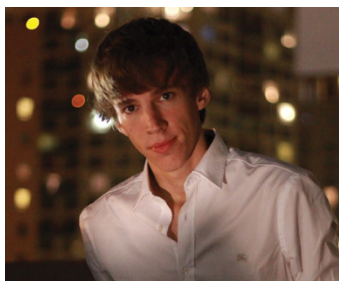
- ✓ Application form
- ✓ Copy of passport
- ✓ Copy of current visa
- ✓ Bank statement (at least \$15,000 / no more than 3 months old)
- ✓ Proof of Highest Education Attended (high school diploma or something proving the student has finished some form of higher education)
- ✓ \$150 non-refundable processing fee
- ✓ \$200 SEVIS fee
- ✓ \$100 tuition deposit
- ✓ \$1,000 change of status fee (which includes the \$300 U.S. immigration application fee and \$22 mailing fee) if you use our lawyer
- ✓ Additional documents (if you use our lawyer, our lawyer will tell you which documents you should bring for change of status)



**LANGUAGE SYSTEMS**  
INTERNATIONAL  
COLLEGE OF ENGLISH

[www.languagesystems.edu](http://www.languagesystems.edu)

## What our students say:



Student's Name: Mat

Country: Poland

"Before I got to LA, I couldn't believe that studying English could be easy and fast. But I changed my mind when I took the ESL morning program at Language Systems. After that my language skills improved a lot. We studied writing, speaking and grammar every day with really good teachers. We always talked about interesting topics, usually about current issues in the USA. This school taught me not just English, but how to live in America as well."



Student's Name: Kubra

Country: Turkey

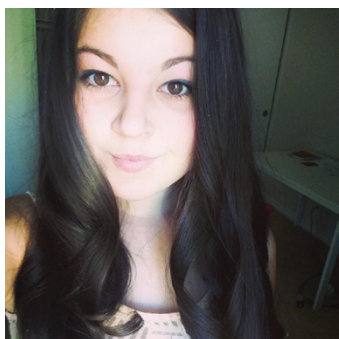
"Ever since I came to Language Systems, my English has improved a lot in the ESL Program. I learned a lot from my teachers; my Reading, Speaking and Grammar classes helped me to speak English properly. In addition to my development in the ESL program, the conversation class highly contributed to my growth. Also, the dance classes and outside-the-classroom activities, such as making a movie, beach parties, and sightseeing, contributed to my English development, and also helped me gain many new friends from different countries. I will never forget my 6 months in Los Angeles at Language Systems."



Student's Name: Daisuke

Country: Japan

"I'm happy to come to Language Systems because I met many friends who are from other countries. I couldn't speak English in the beginning, but I can communicate with non-Japanese speakers in English now. You should come to Language Systems. It's so much fun! Your English will improve."



Student's Name: Yana

Country: Kazakhstan

"For me, Language Systems is a very positive place where you can get a lot of energy and motivation not only from teachers, but also from students! Every day I hear a lot of new stories of students' lives. I didn't expect that I will learn a lot about different cultures! And now I realize that every country and culture is unique! So Language Systems' experience will help you to develop your skills in understanding cultures, which will be helpful for your whole life!"



**LANGUAGE SYSTEMS**  
INTERNATIONAL  
COLLEGE OF ENGLISH

[www.languagesystems.edu](http://www.languagesystems.edu)

# Accommodations



## SWEET HOME CALIFORNIA

Housing accommodations are provided to Language Systems students through an independent company called Sweet Home California. This company provides Dormitory and Homestay facilities located close to each school's campus. Sweet Home California will carefully match the student's desires and needs with the available accommodations.

### **Dormitory**

Sweet Home California has dormitories that are conveniently located near all 4 Language Systems' campuses. There are both private and shared rooms available, depending on the location, and all dormitories have internet access available to students. Meals are not included.

### **Homestay**

The Homestay experience is a unique accommodation choice for students because it welcomes them into an American home. Students who choose to live with a homestay family are looking for a safe, welcoming, and comfortable environment in which they can be introduced to American customs, traditions, and family lifestyle. The home allows them to practice their English on a daily basis and enjoy homemade meals in a familiar setting. Homestay families typically plan special events such as family outings and guided tours of the city for the student. The homestay program carefully matches students with suitable families. We often see how friendships, which last a lifetime, are formed.

### **Airport Transfer Service**

A designated Sweet Home California staff member will meet students at the airport upon their arrival and take them to either their homestay or dormitory location. The SHCA staff will also provide students with a brief orientation session upon their arrival for students to become familiar with basic contacts and emergency information. The staff will also explain how to get to school on the first day of class. If students need particular assistance in anything, our staff will be happy to help.

For more information about accommodations, please check Sweet Home California's website [www.shcalifornia.com](http://www.shcalifornia.com) or contact them at [info@shcalifornia.com](mailto:info@shcalifornia.com)



**LANGUAGE SYSTEMS**  
INTERNATIONAL  
COLLEGE OF ENGLISH

[www.languagesystems.edu](http://www.languagesystems.edu)

Dreams  
come  
True

## Contact Us!



**Downtown Los Angeles**  
3250 Wilshire Blvd., Suite 200  
Los Angeles, CA 90010  
Tel: 213-385-3665  
Fax: 213-385-7908  
inquiry@languagesystems.edu



**Northeast Los Angeles**  
1635 W. Main Street  
Alhambra, CA 91801  
Tel: 626-284-9852  
Fax: 626-239-3552  
inquiry@languagesystems.edu



**Orange County**  
750 S. Placentia Ave.  
Placentia, CA 92870  
Tel: 714-572-1771  
Fax: 714-579-0498  
inquiry@languagesystems.edu



**South Bay Los Angeles**  
3528 Torrance Blvd., Suite 304  
Torrance, CA 90503  
Tel: 310-792-7770  
Fax: 310-755-3117  
inquiry@languagesystems.edu

**Agent Contact**  
**International Recruitment & Admissions**  
Tel: 213-385-2365 / 213-261-0773  
Fax: 323-389-9134  
admissions@languagesystems.edu

## Find us on:



/LSIUSA



@languagesystems



@languagesystems



/Languagesystemsusa

[www.languagesystems.edu](http://www.languagesystems.edu)